



REUNIÓN DE LA ASOCIACIÓN TERRITORIAL DE CASTILLA LA MANCHA DE LA S.E.A.P.

**HOSPITAL NUESTRA SEÑORA
DEL PRADO**

Talavera de la Reina

CASO CLÍNICO

- **Mujer de 71 años**
- **Diabetes mellitus 2, HTA, IC, Síndrome ansioso-depresivo, Parkinson**
- **Diarrea de 10 meses**

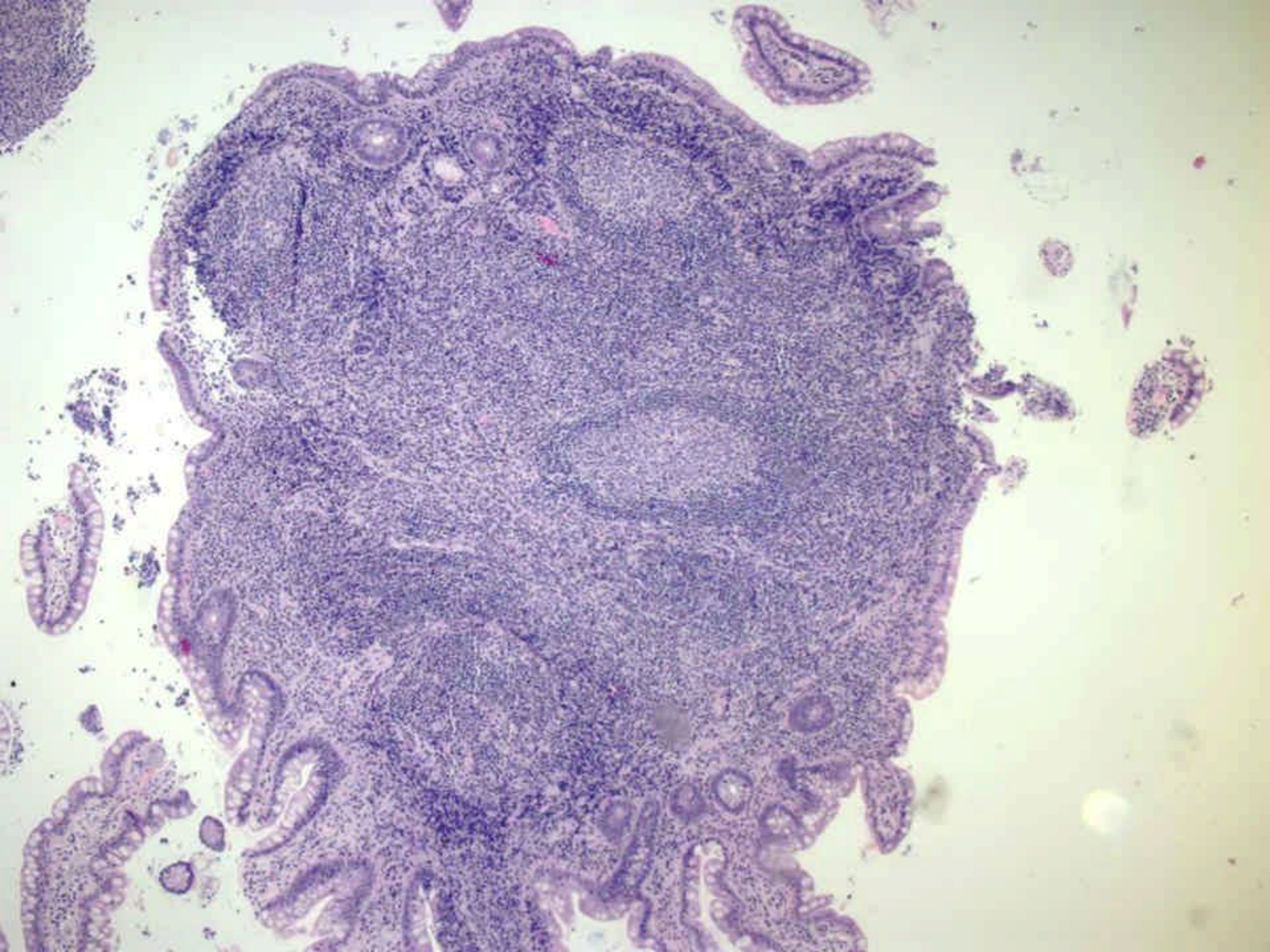
TRÁNSITO INTESTINAL

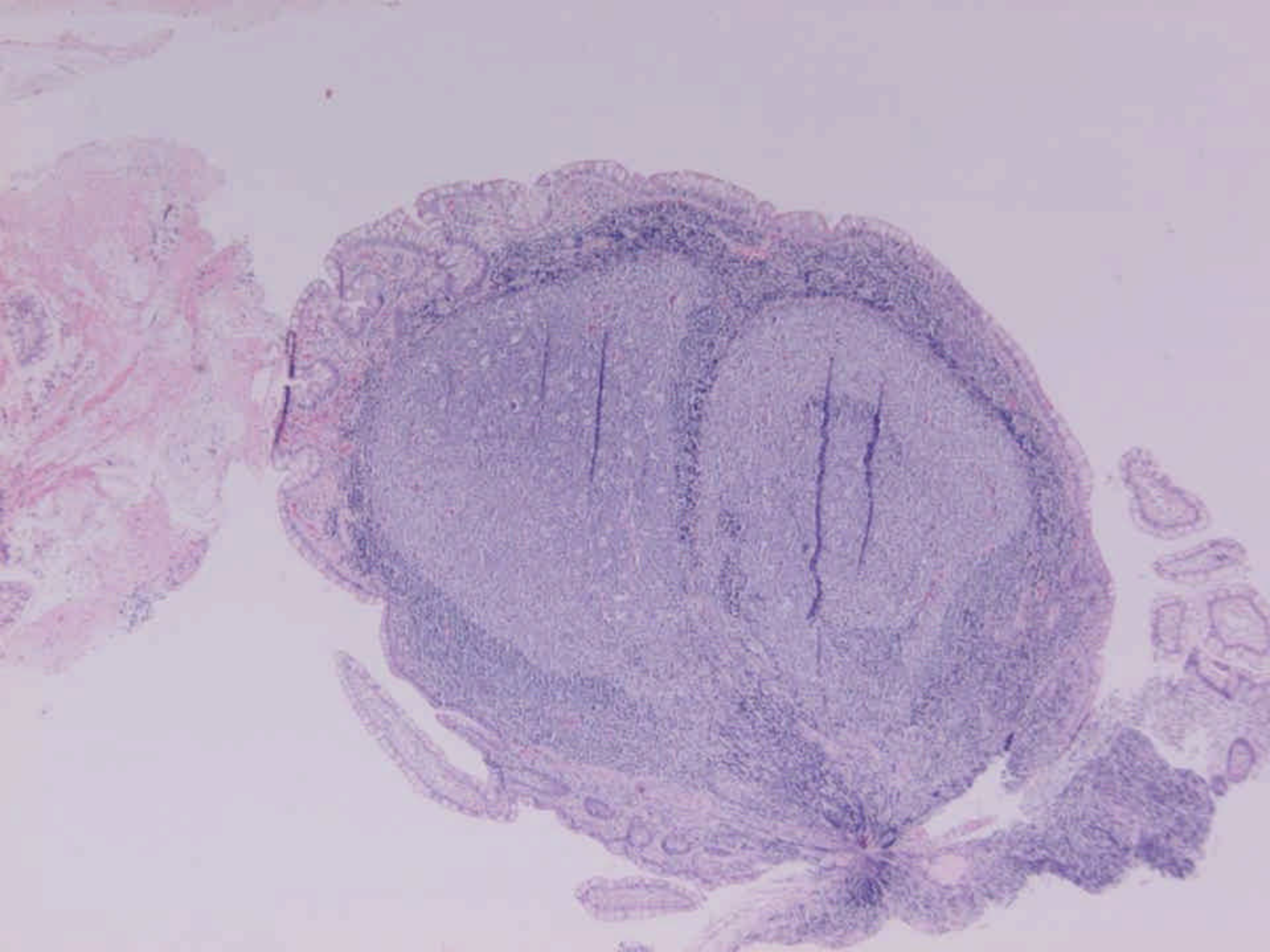
- **Ileon terminal: Defectos repleción tipo micronodular sin espiculación, estenosis o dilatación**
- **Resto normal**

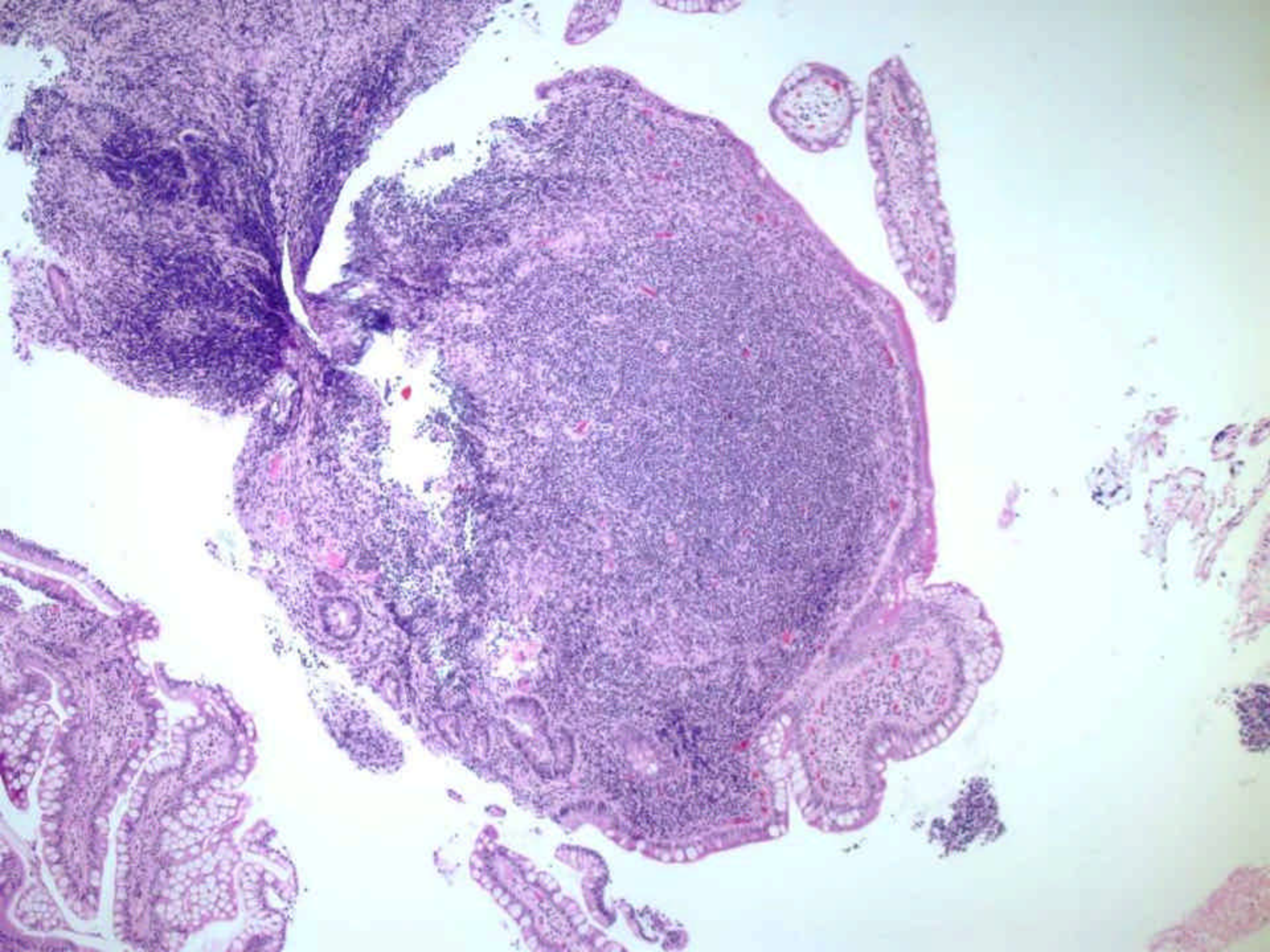


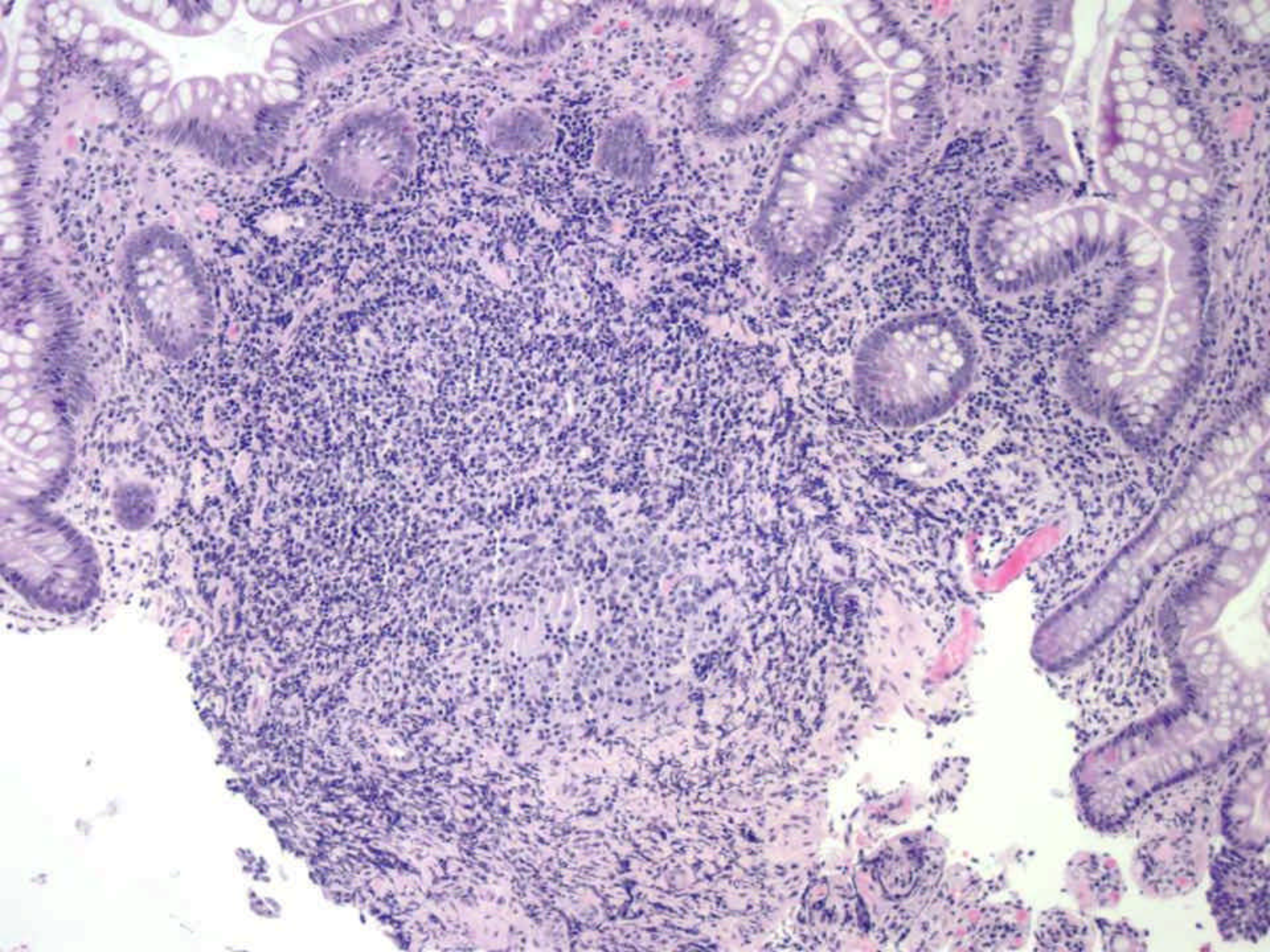
COLONOSCOPIA

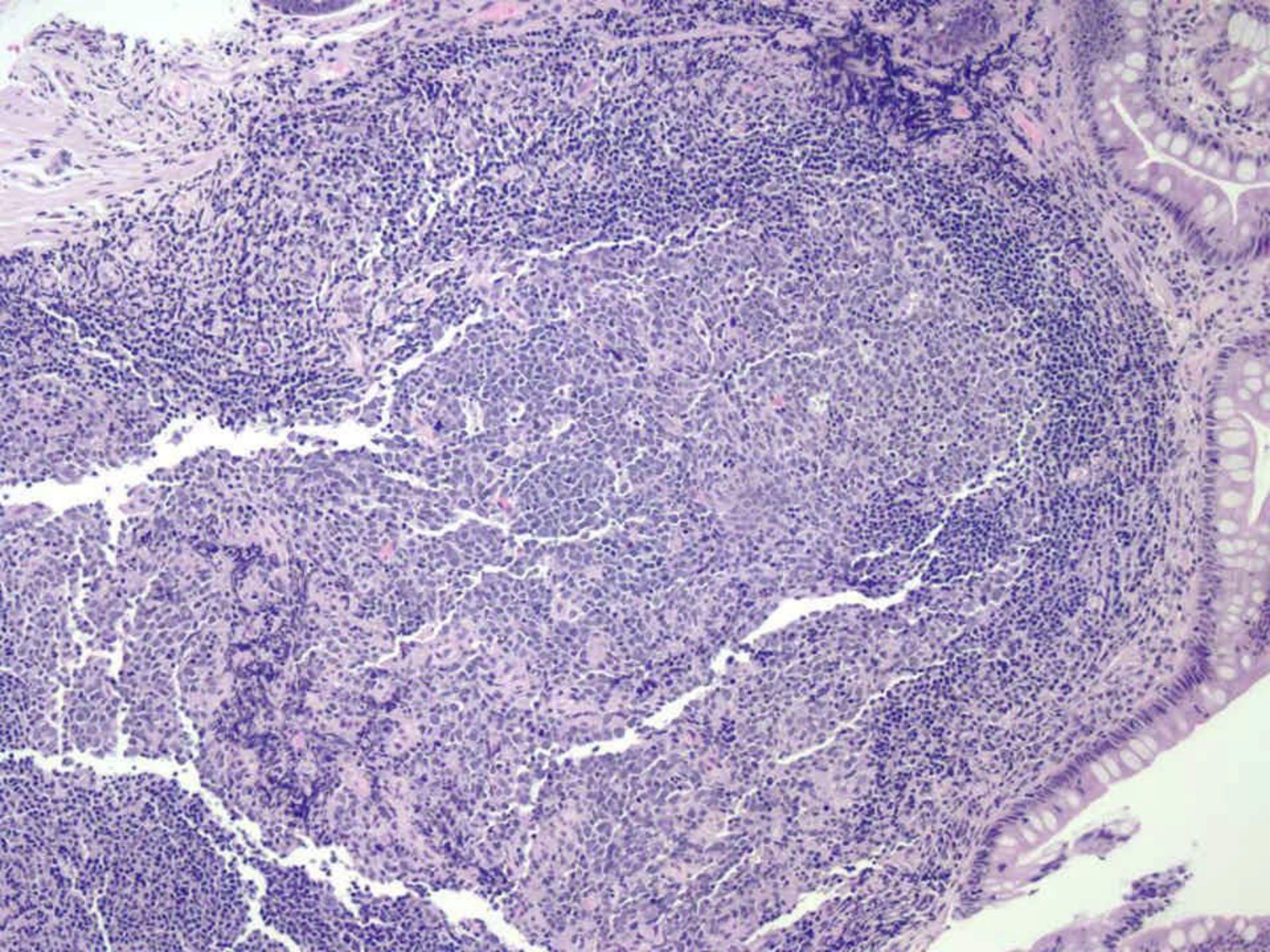
- **Ileon terminal: múltiples imágenes polipoides.**
- **Colon: Divertículos en colon izquierdo**

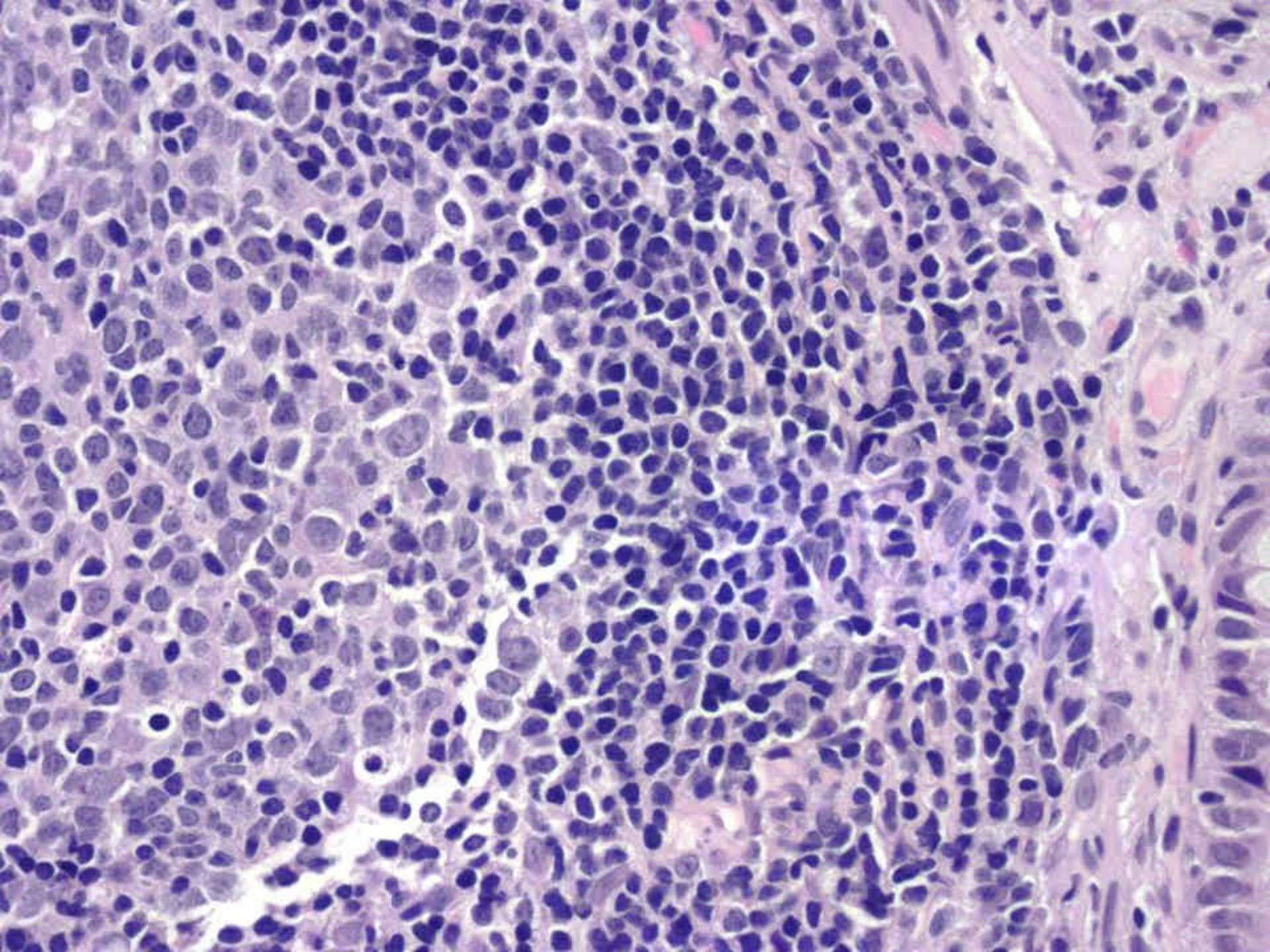


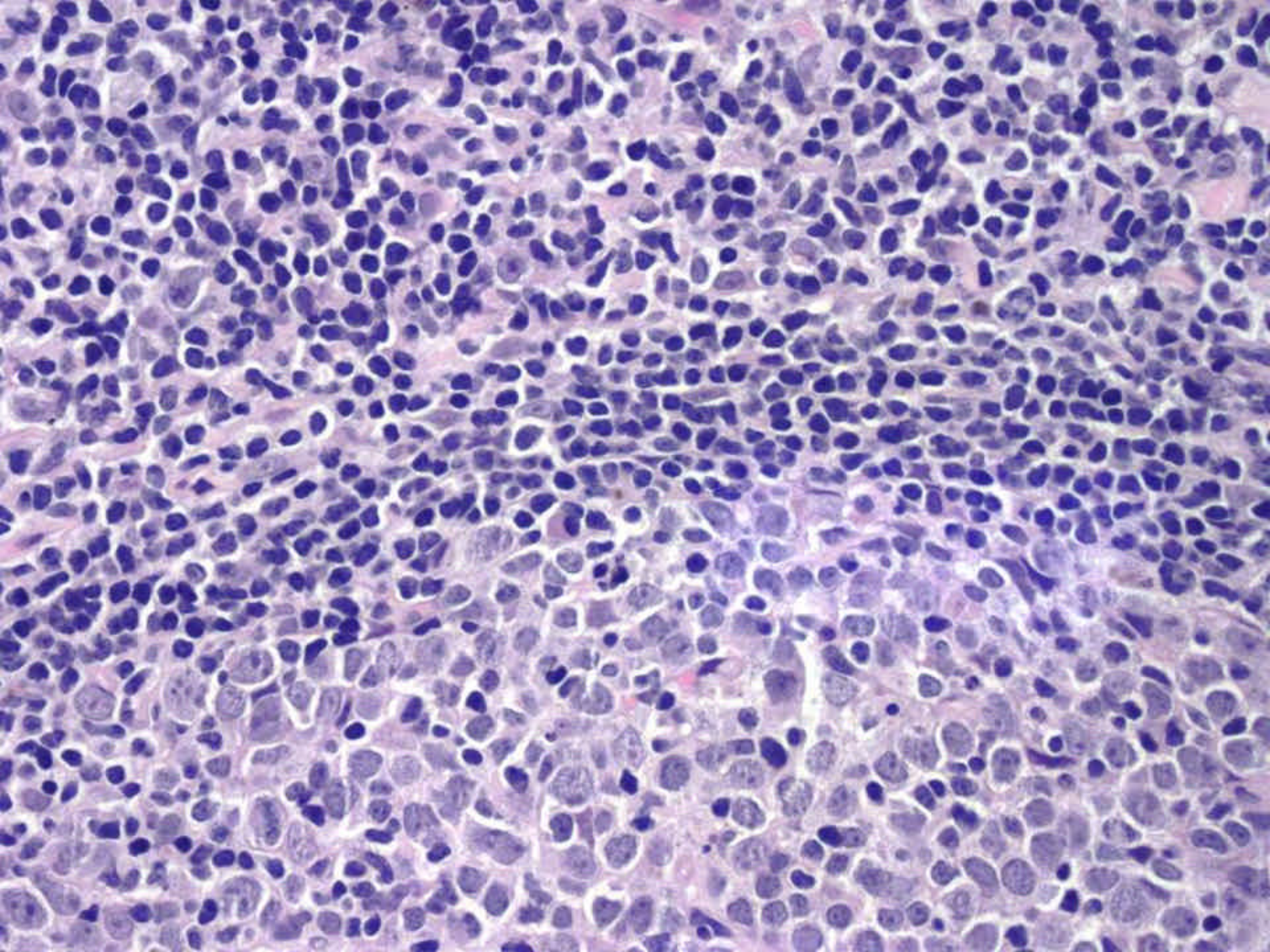


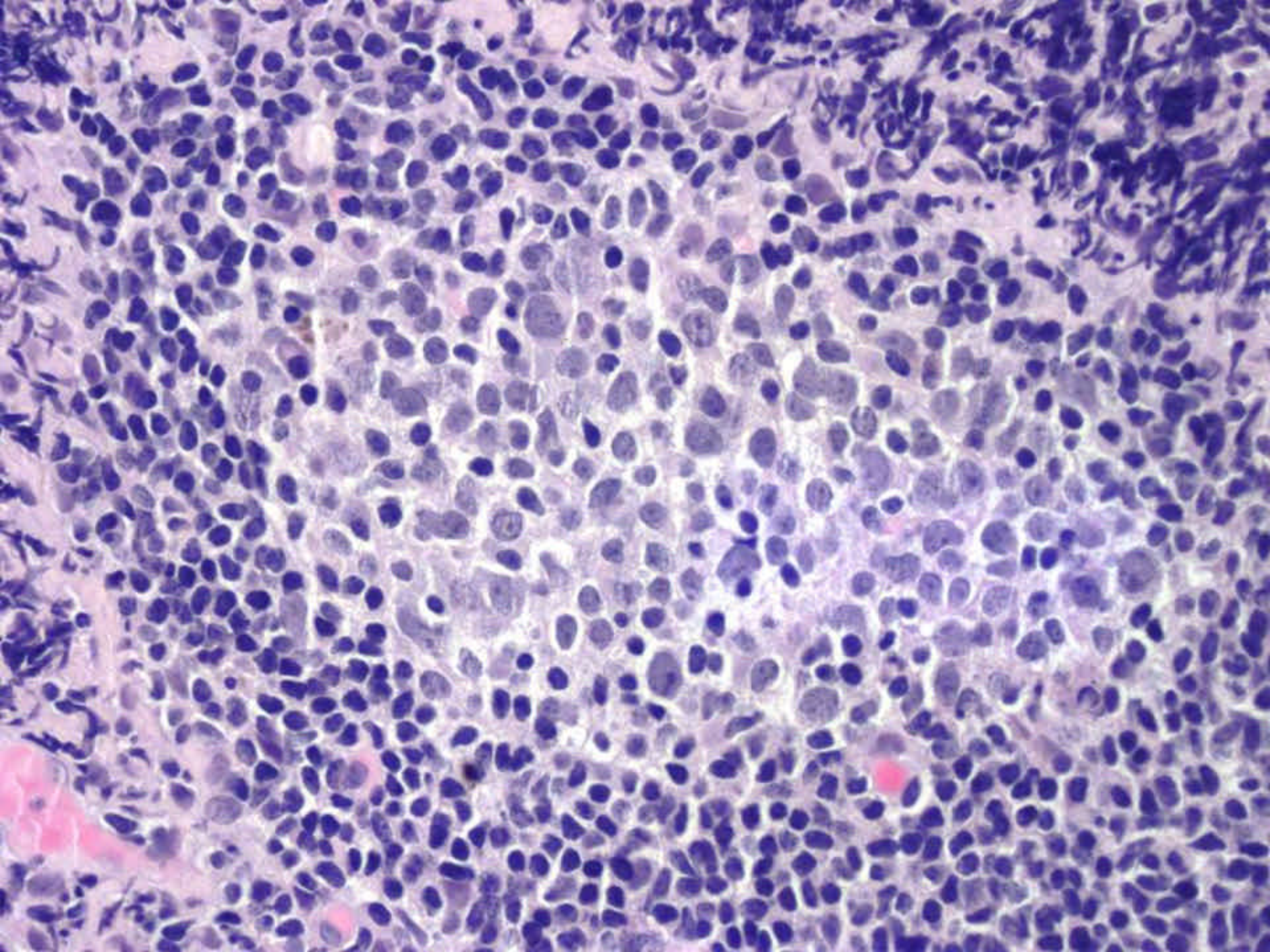




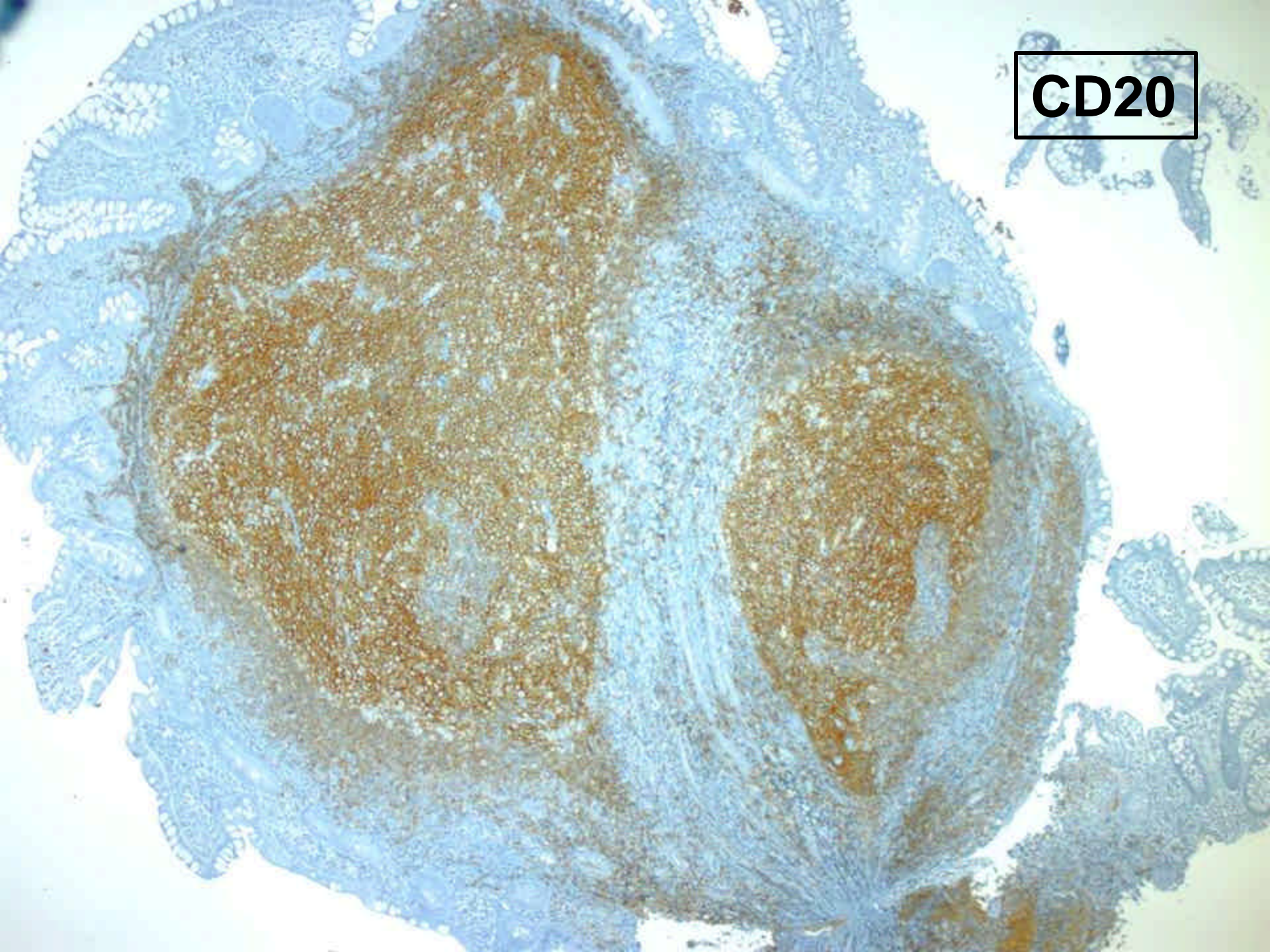


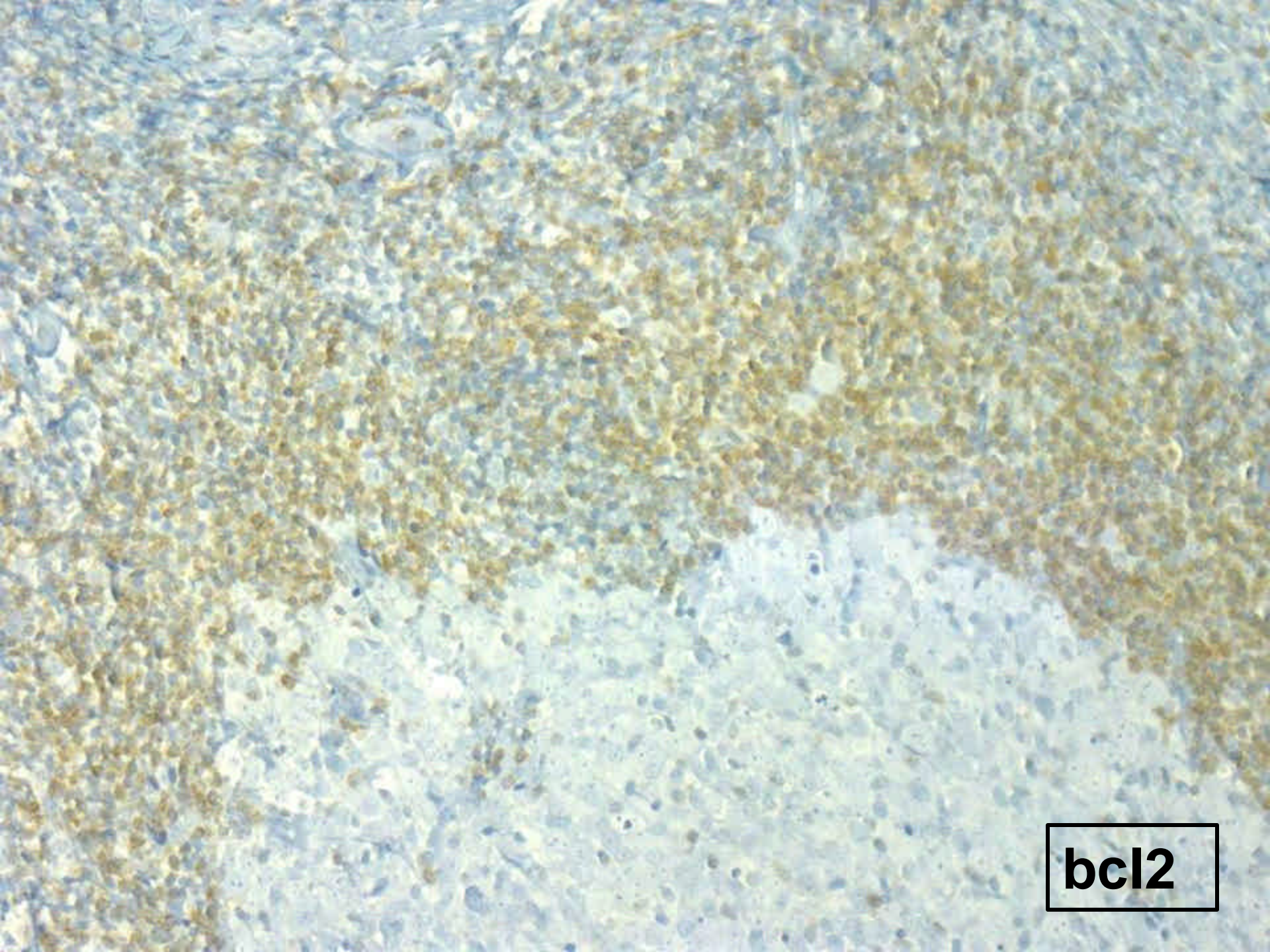






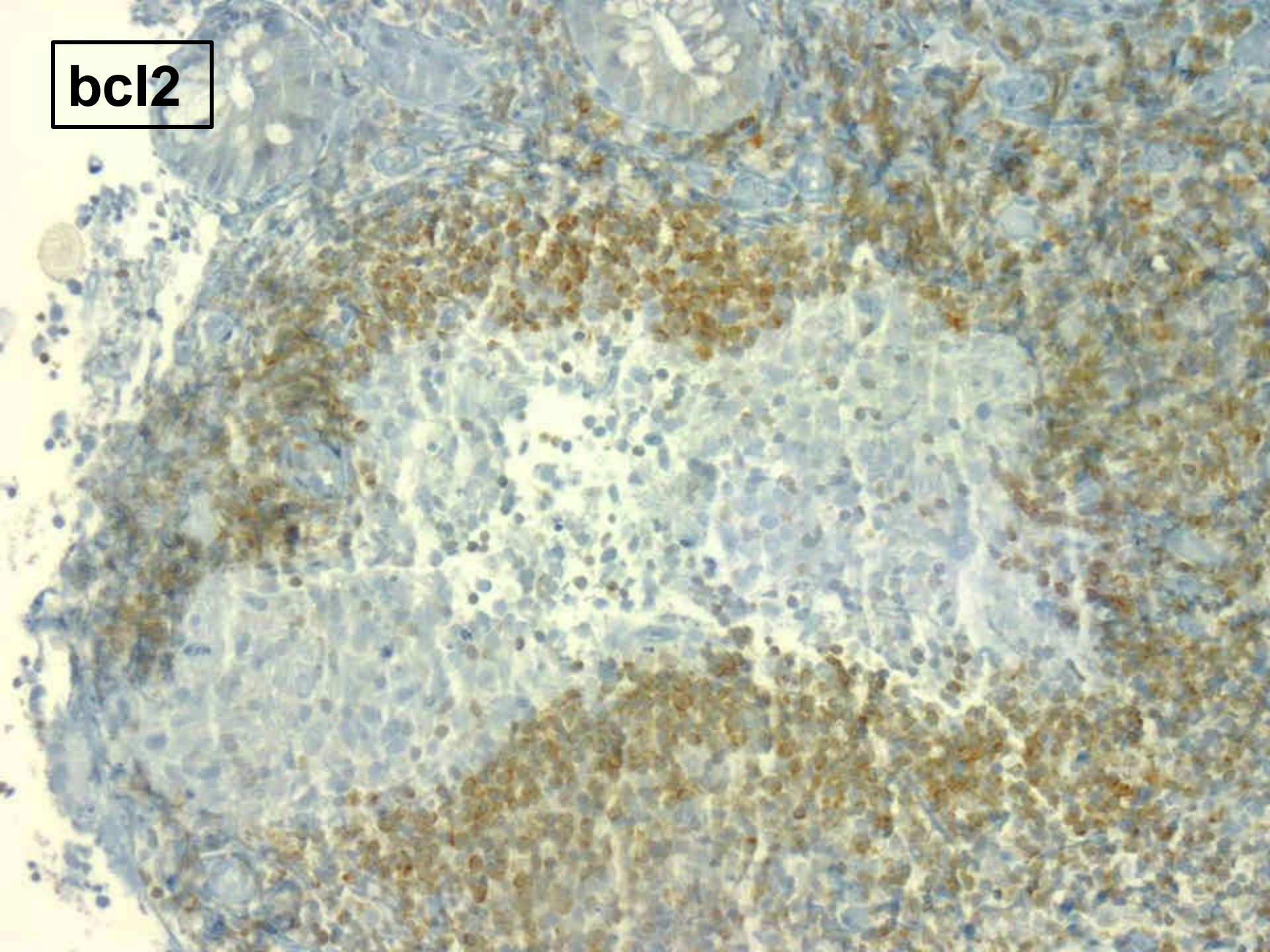
CD20

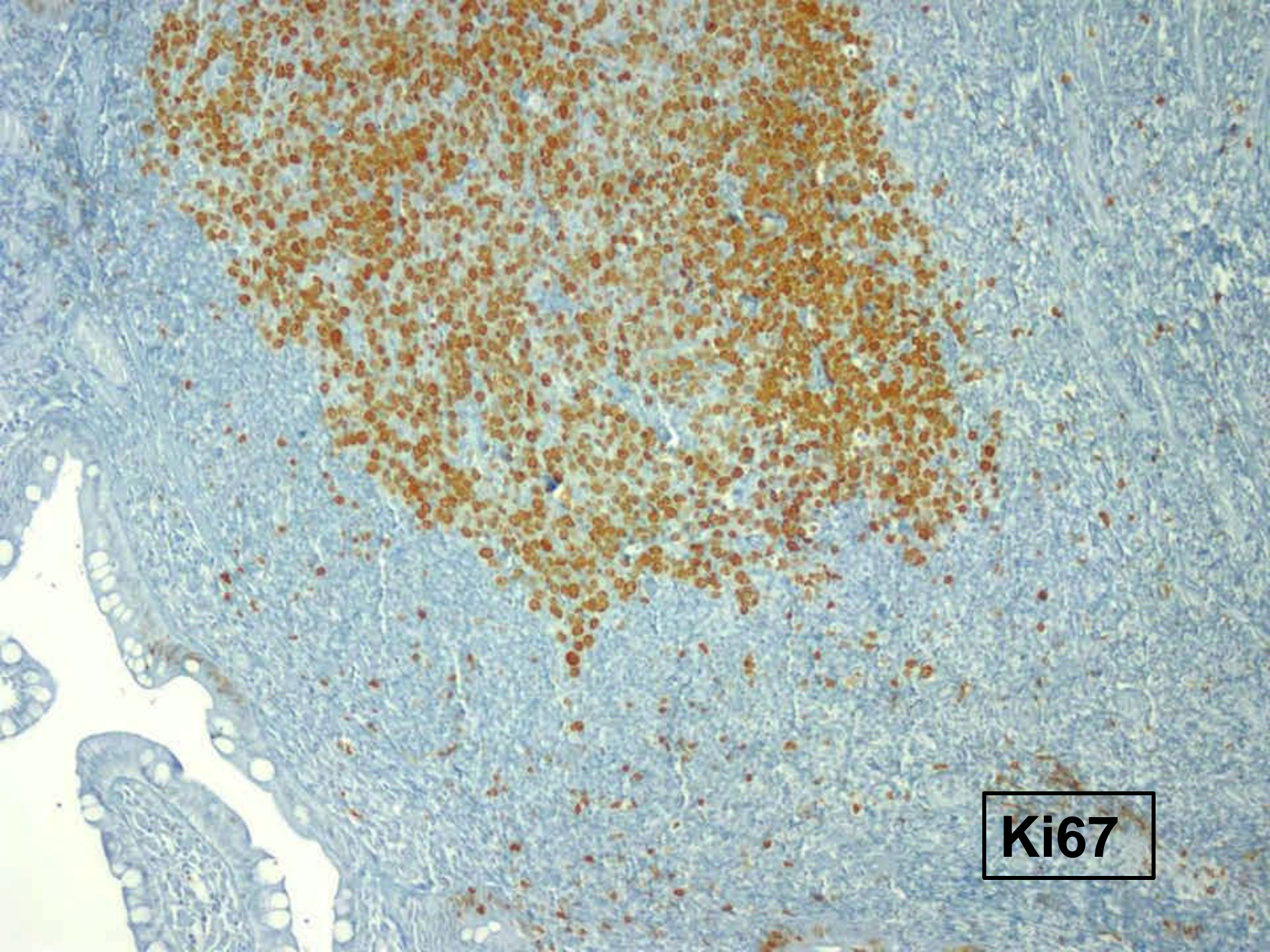




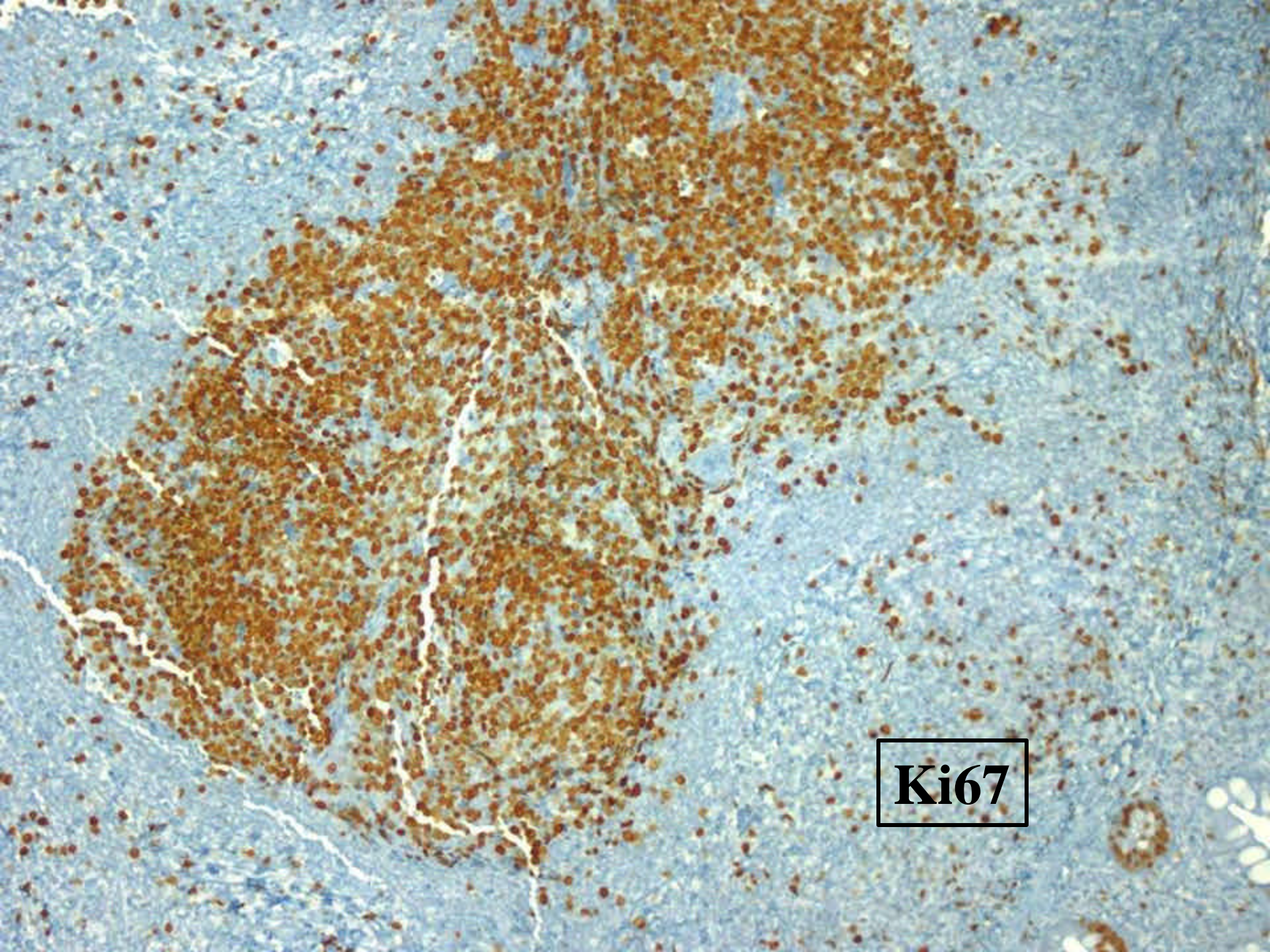
bcl2

bcl2



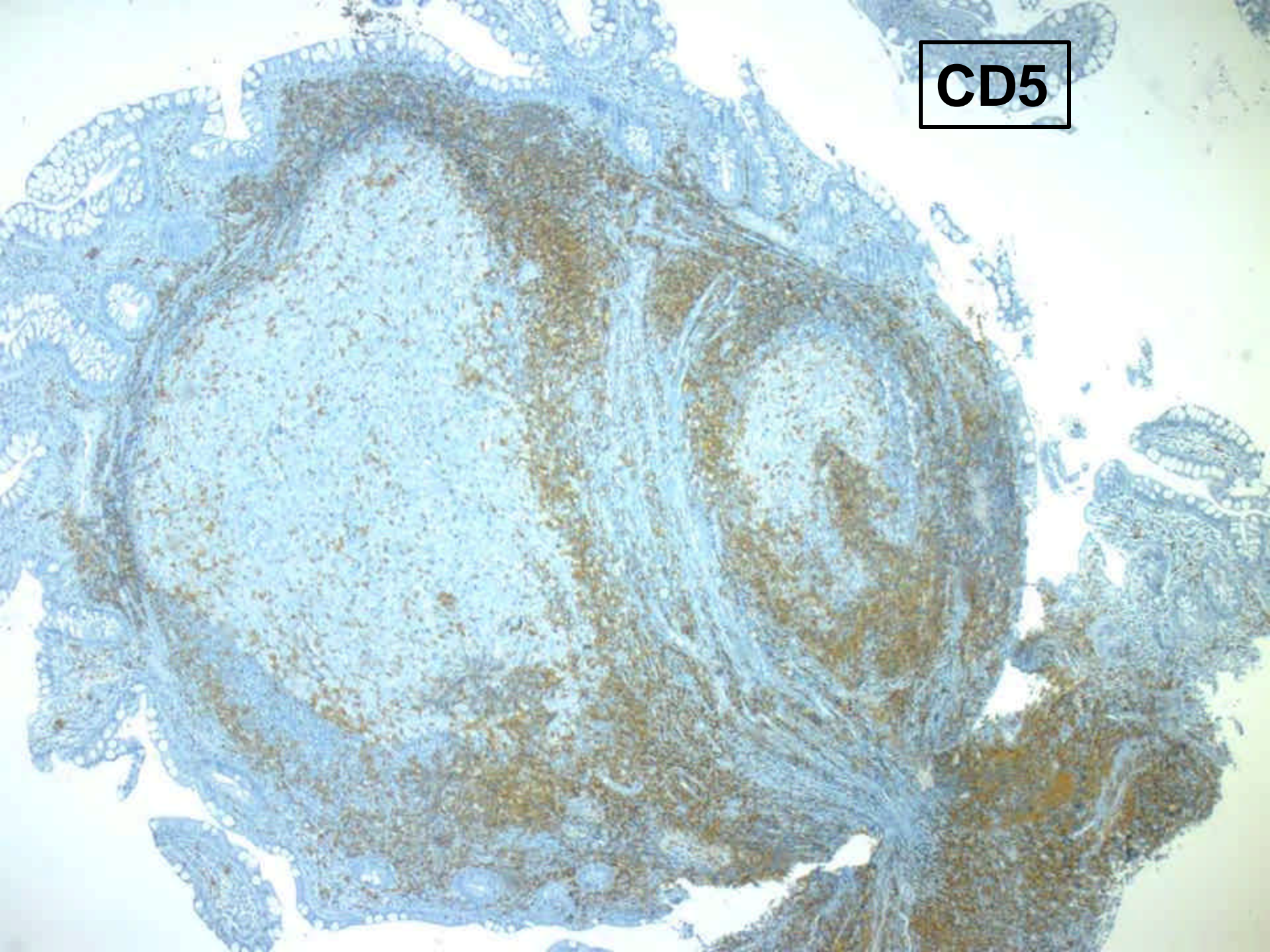


Ki67

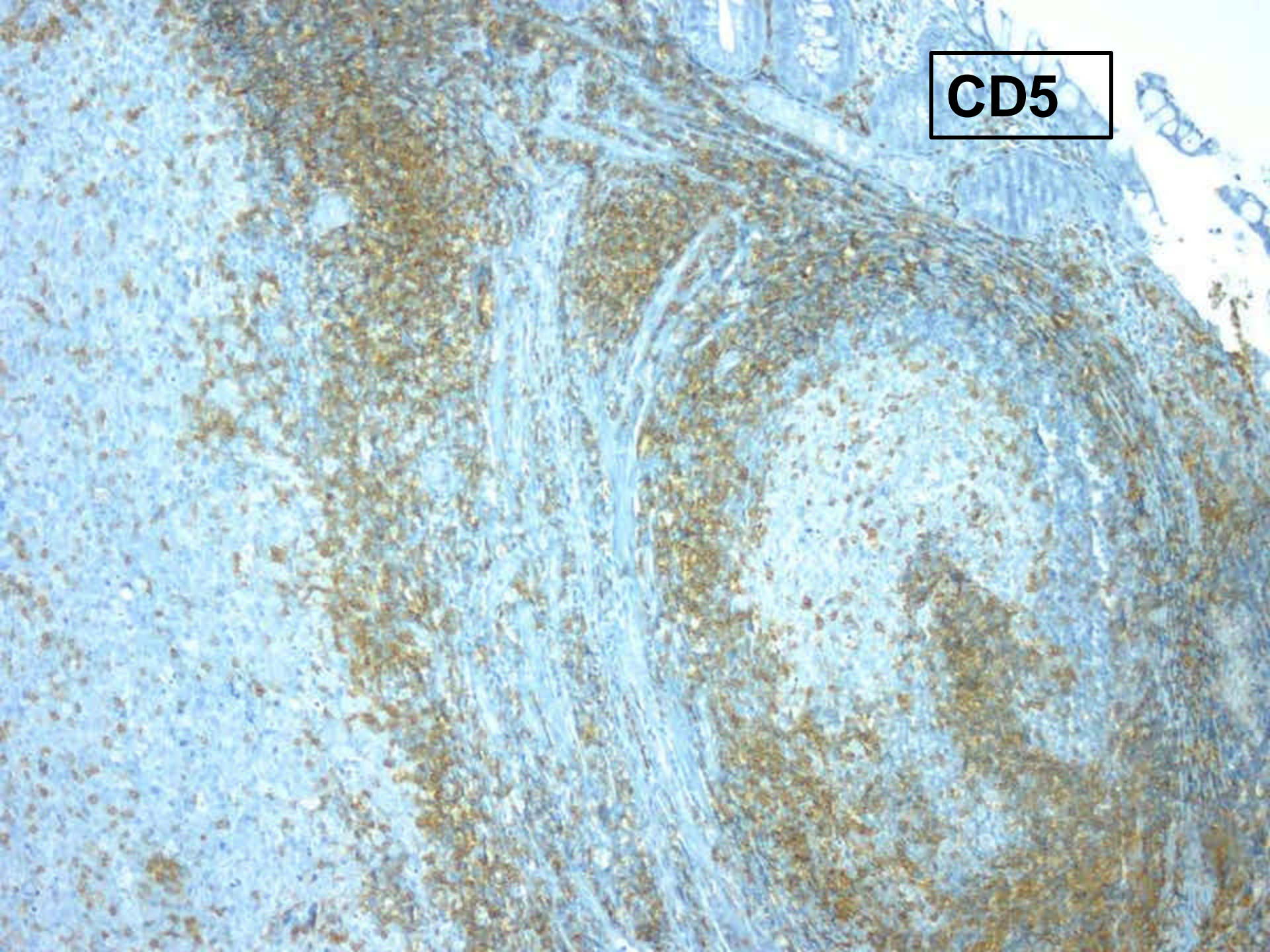


Ki67

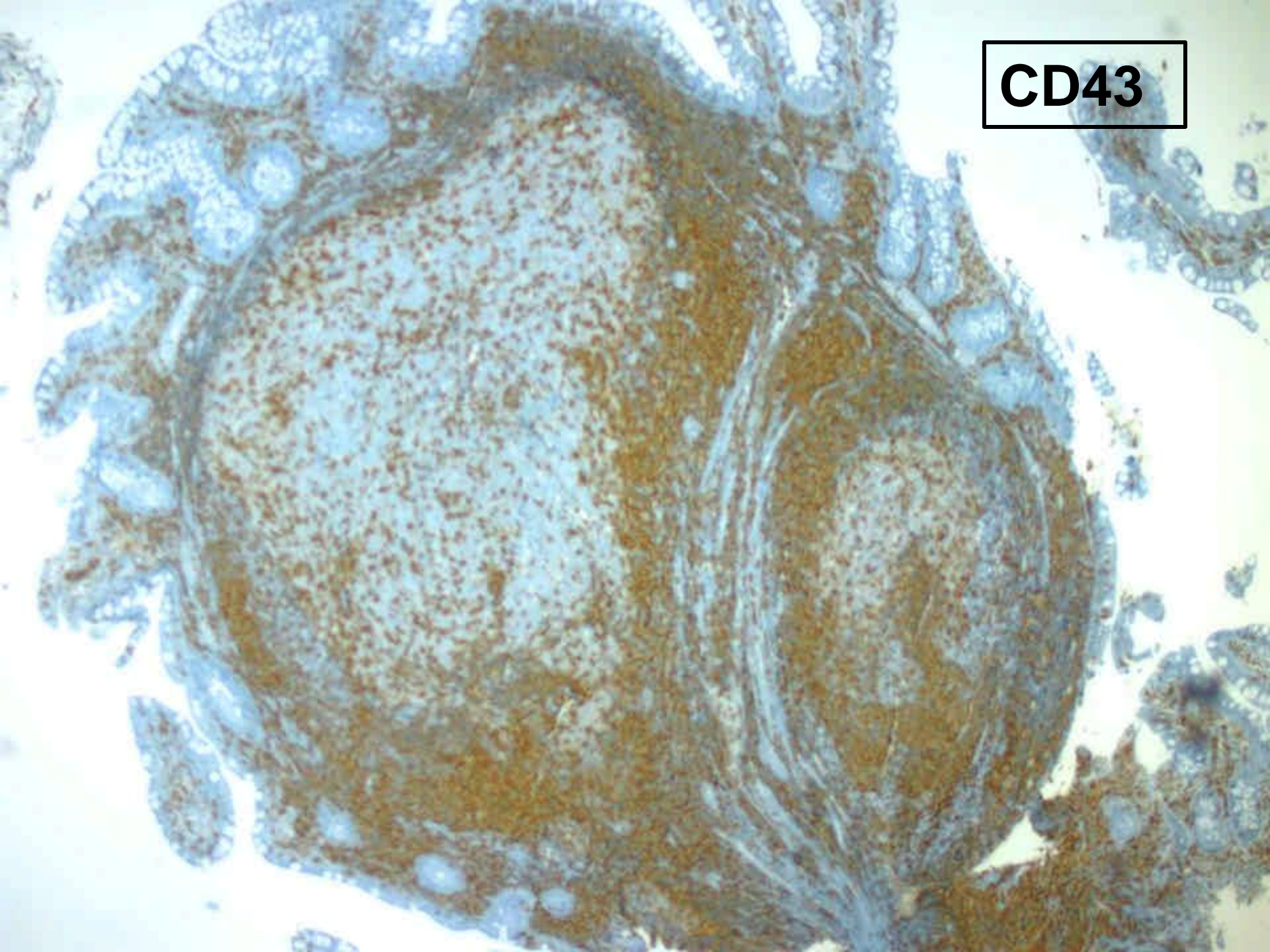
CD5



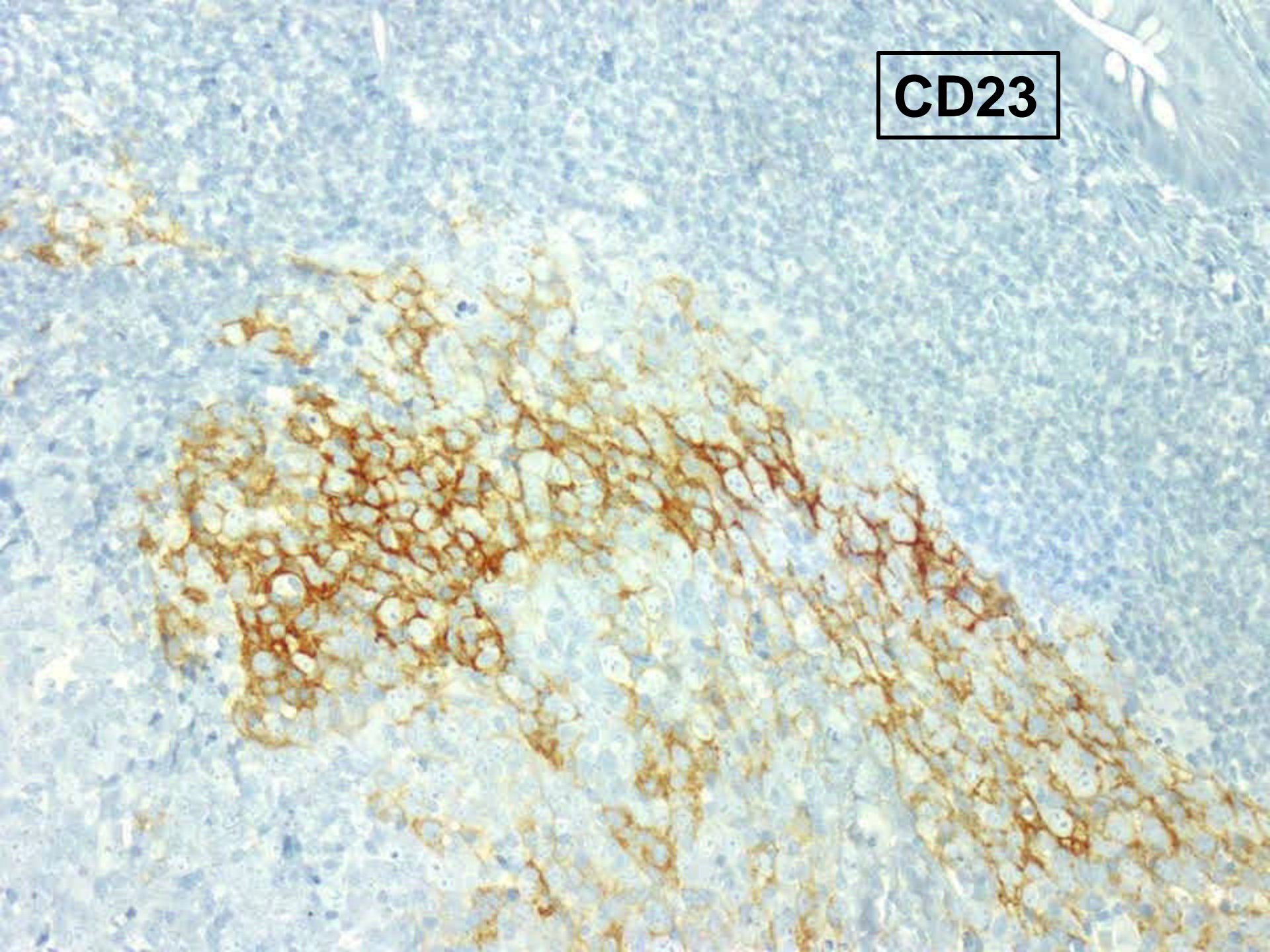
CD5



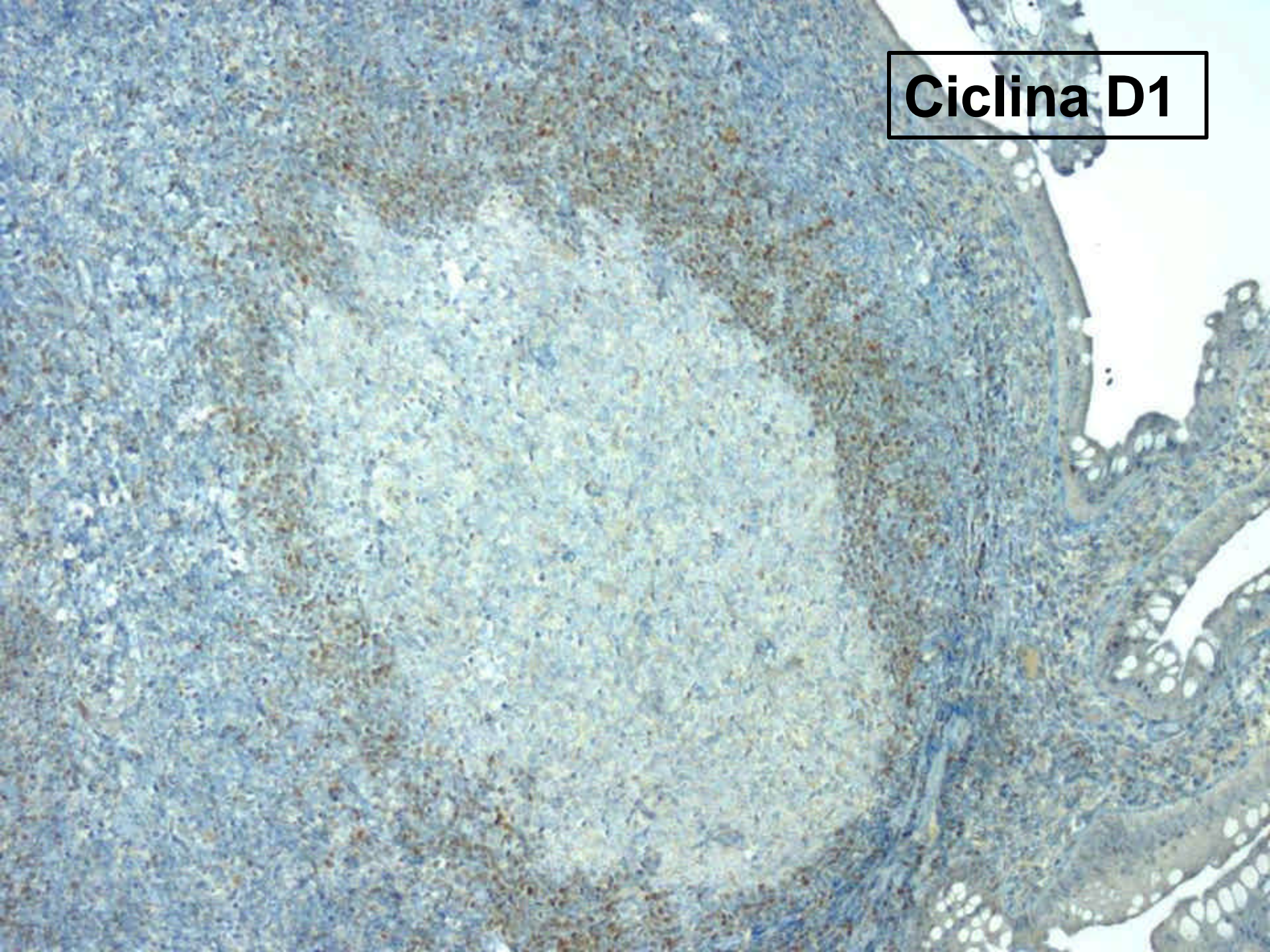
CD43

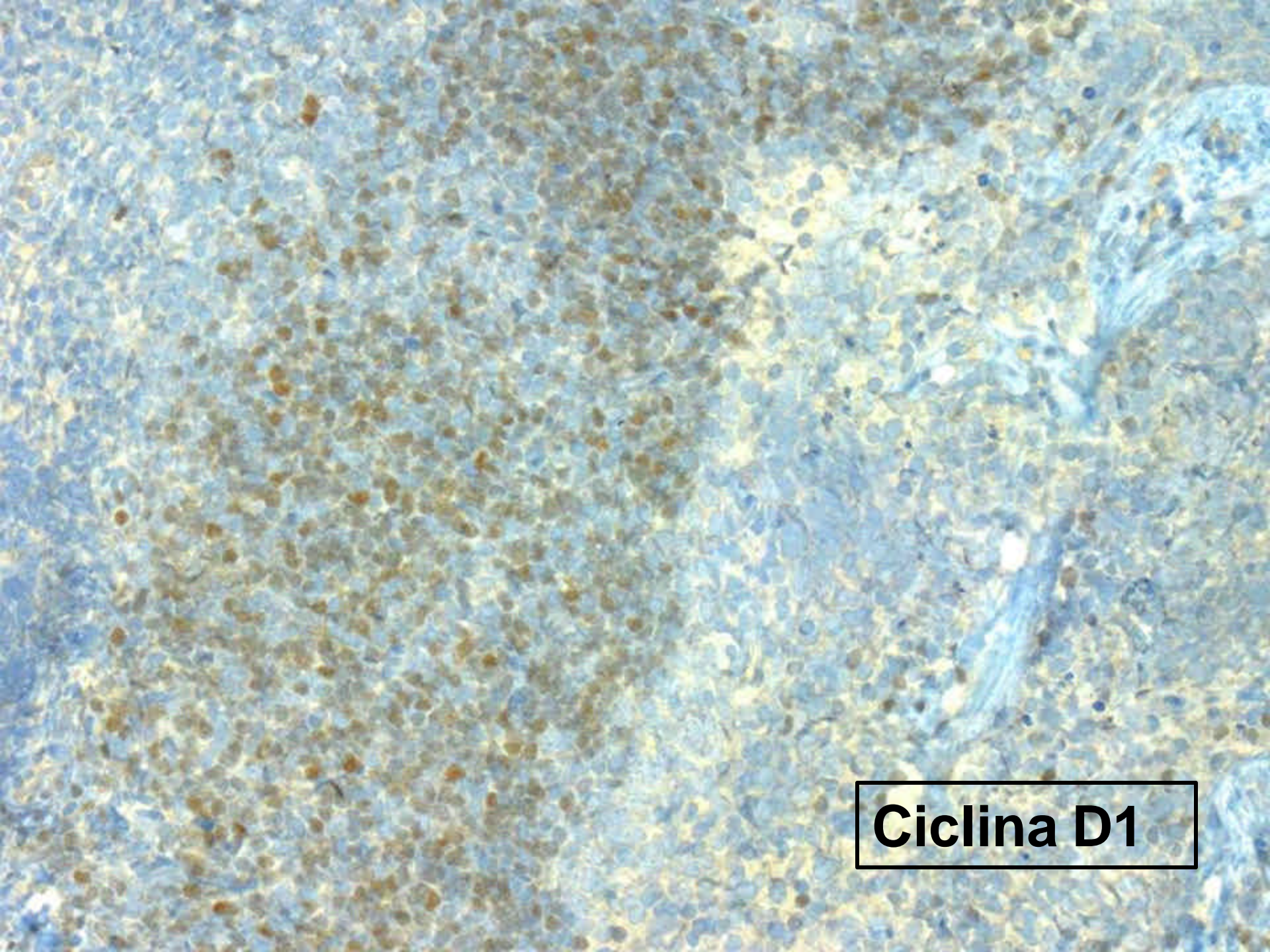


CD23

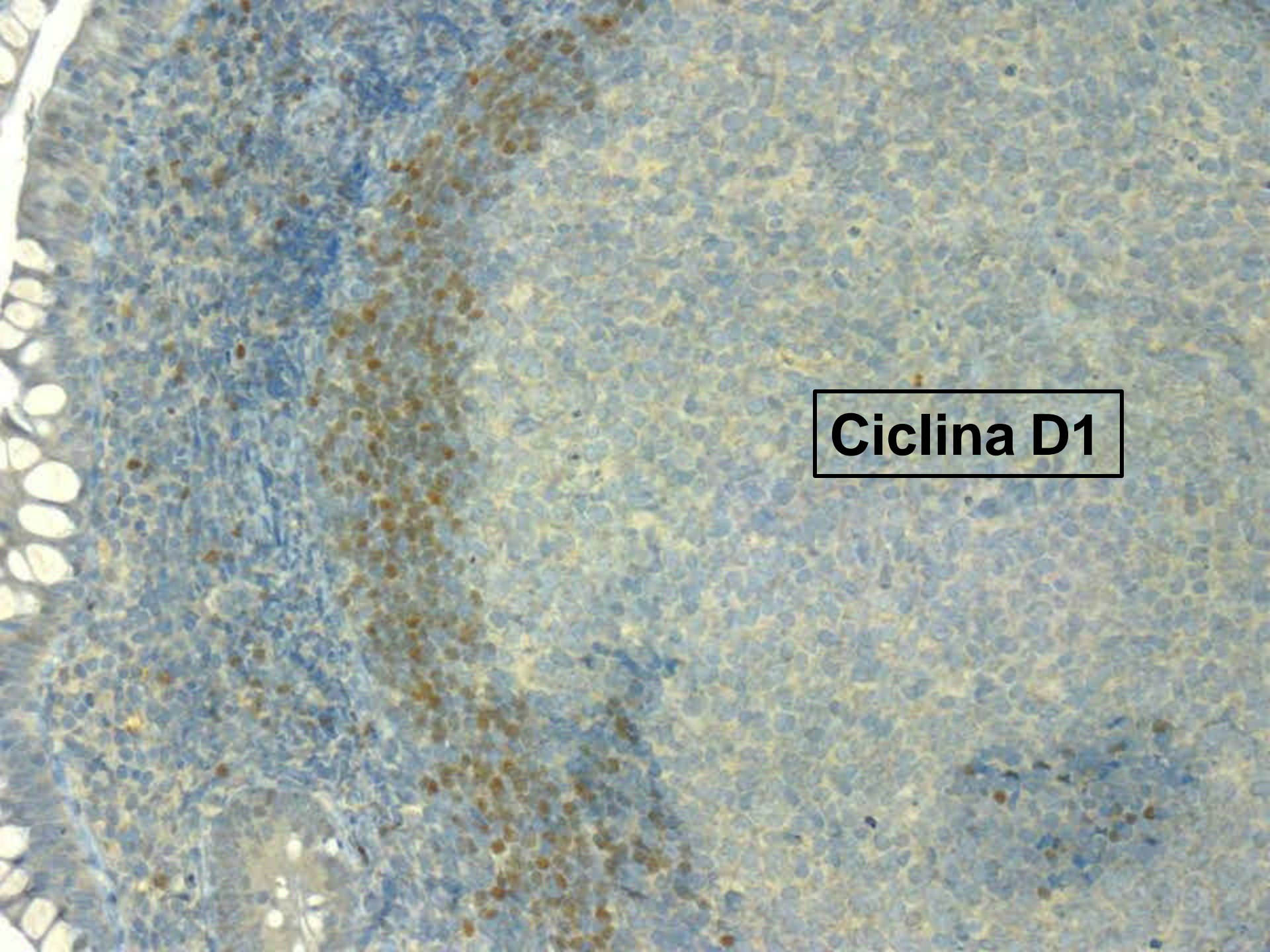


Ciclina D1



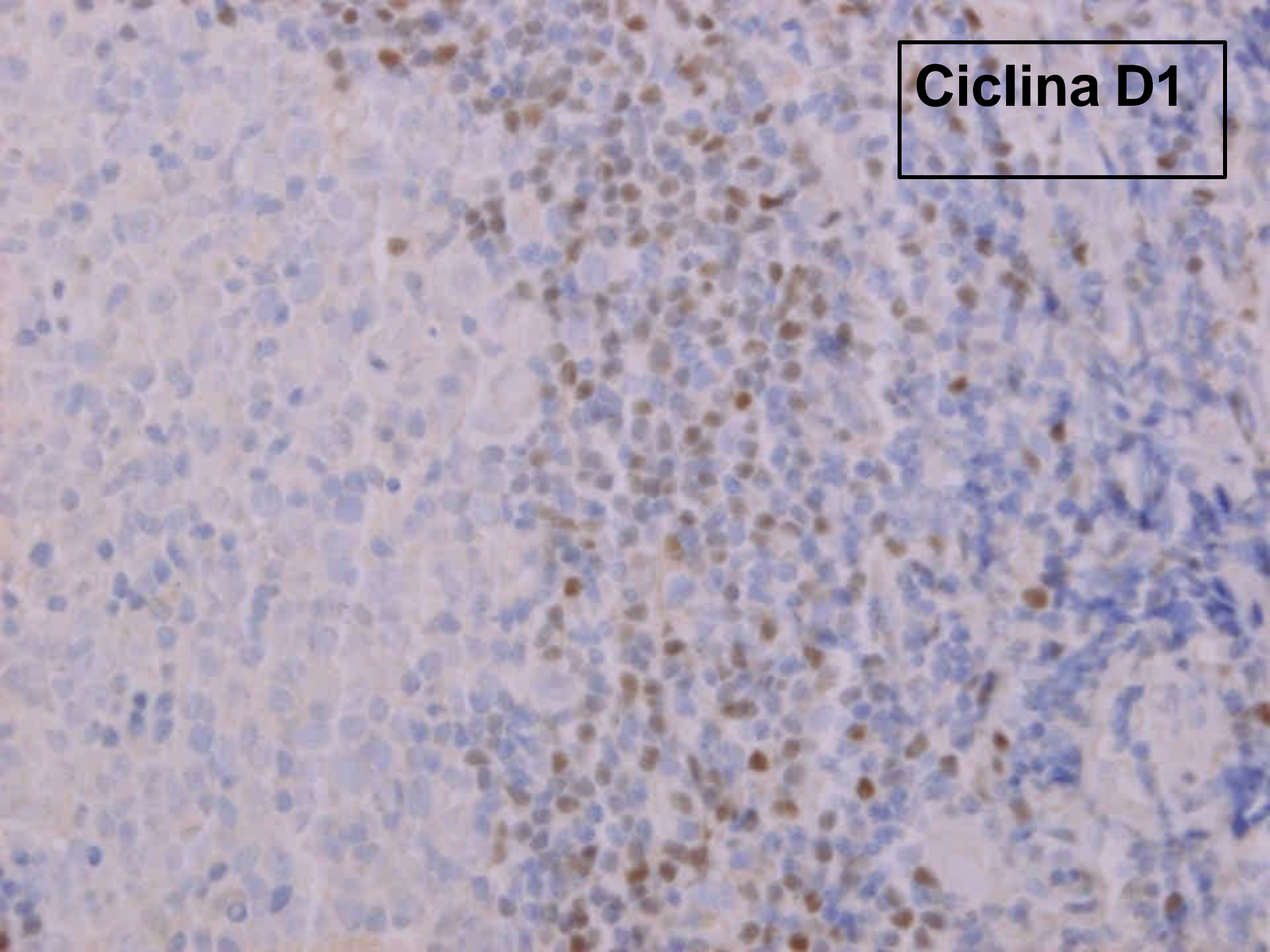


Ciclina D1

A histological section of tissue, likely from the gastrointestinal tract, stained with hematoxylin and eosin (H&E). The tissue shows a dense population of cells with blue nuclei and pink cytoplasm/extracellular matrix. A prominent feature is a large, irregularly shaped area of brown staining, which is characteristic of immunohistochemical (IHC) staining for Cyclin D1. This brown staining is concentrated in the central and upper-left regions of the image. The overall structure appears to be a cross-section of a tubular organ, with a clear lumen on the left side. The brown staining is localized to specific cells, indicating the presence of Cyclin D1 protein in those cells.

Ciclina D1

Ciclina D1



MORFOLOGIA

- **Proliferación linfoide**
- **Grandes folículos linfoides**
- **Centros germinales de aspecto reactivo**
- **Mantos “rígidos”**

INMUNOHISTOQUÍMICA

- **Centros germinales reactivos:**
 - bcl2 negativos
 - Ki67 elevado
- **Zona del manto:**
 - CD5 positivos
 - CD23 negativos
 - CD43 positivos
 - Ciclina D1 positivos

ESTUDIO MOLECULAR

- **Reordenamiento monoclonal del gen IgH: Positivo**
- **Reordenamiento monoclonal del gen bcl1, t(11;14): Negativo**
- **FISH para t(11;14): No fue posible realizar por escaso material.**

DIAGNÓSTICO

**Linfoma de células del manto de
localización “in situ”**

LINFOMA DE CÉLULAS DEL MANTO

- **Espinet B, Solé F, Pedro C et al. Clonal proliferation of cyclin D1-positive mantle lymphocytes in an asymptomatic patient: an early-stage event in the development or an indolent form of a mantle cell lymphoma? Hum Pathol 2005; 36(11): 1232-7.**
- **Padmanabhan V, Trainer TD. Synchronous adenocarcinoma and mantle cell lymphoma of the colon. Arch Pathol Lab Med 2003; 127: e64-6.**
- **Nodit L, Valer DW, Jacobs SA et al. Indolent mantle cell lymphoma with nodal involvement and mutated immunoglobulin heavy chain genes. Hum Pathol. 2003; 34: 1030-1034.**
- **Hurlstone D.P. Early phase Mantle Cell Lymphoma: macroscopic similarities to terminal ileal Crohn`s disease. Am J Gastroenterol 2002; 97 (6): 1577-8.**
- **Kanehira K, Braylan R C, Lauwers GY. Early phase of intestinal mantle cell lymphoma: a report of two cases associated with advanced colonic adenocarcinoma. Mod Pathol. 2001; 14: 811-817.**

**¿FORMAS TEMPRANAS O
INDOLENTES?**

TAC TORACOABDOMINAL

- **Mediastino: Pequeñas adenopatías subcentimétricas inespecíficas.**
- **Mesenterio y retroperitoneo: Múltiples pequeñas adenopatías inespecíficas**
- **Hígado, vesícula, páncreas, bazo y riñones sin alteraciones.**

EVOLUCIÓN

- **Tratamiento sintomático de la diarrea**
- **Dos años después asintomática**

FORMAS TEMPRANAS O INDOLENTES

- **Linfoma folicular**
 - **Cong P, Raffeld M, Teruya-Feldstein J, Sorbara L, Pitaluga S, Jaffe ES. In situ localization of follicular lymphoma: description and analysis by laser capture microdissection. Blood 2002; 99: 3376-3382.**
- **Linfoma esplénico de la zona marginal**
 - **Rosso R, Neiman RS, Paulli M, et al. Splenic marginal zone cell lymphoma: report of an indolent variant without massive splenomegaly presumably representing an early phase of the disease. Hum Pathol. 1995 Jan;26(1).**
 - **Dunphy CH, Bee C, McDonald JW, Grosso LE. Incidental early detection of a splenic marginal zone lymphoma by polymerase chain reaction analysis of paraffin-embedded tissue. Arch Pathol Lab Med. 1998 Jan;122(1):84-6.**

FORMAS TEMPRANAS O INDOLENTES

Leucemia linfática crónica

- **Monoclonal CD5+ and CD5- B-lymphocyte expansions are frequent in the peripheral blood of the elderly. Blood 2004; 103:2337-2342.**
- **Inherited predisposition to CLL is detectable as subclinical monoclonal B-lymphocyte expansion. Blood 2002; 100:2289-90.**
- **B-cell monoclonal lymphocytosis and B-cell abnormalities in the setting of familial B-cell chronic lymphocytic leukemia. Cytometry B clin Cytom 2003; 52:1-12.**
- **Chronic lymphocytic leukemia with low lymphocyte count. Cancer 1993; 71: 2732-8.**

ACTITUD

- Conservadora
- Vigilancia estrecha del paciente