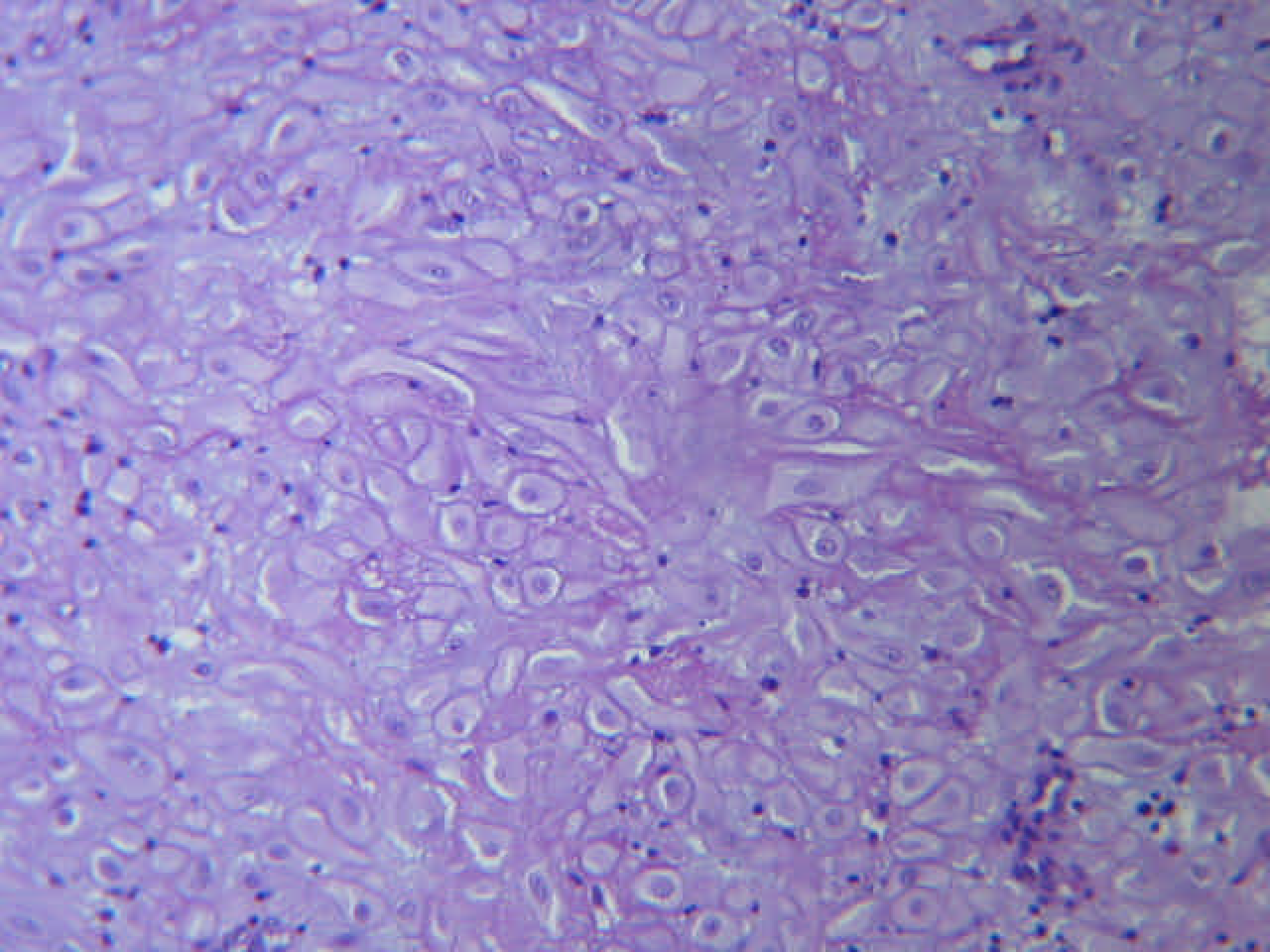
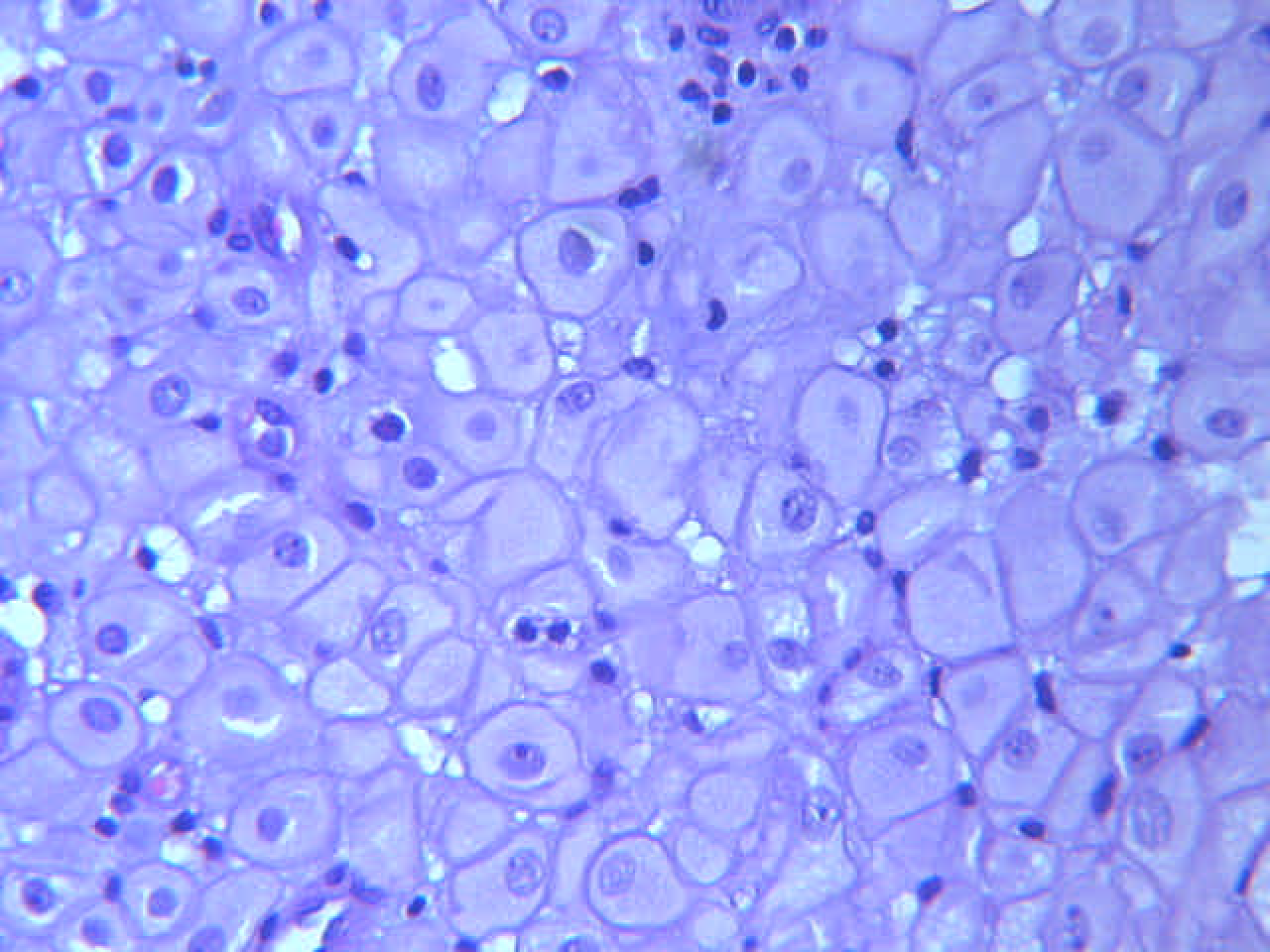


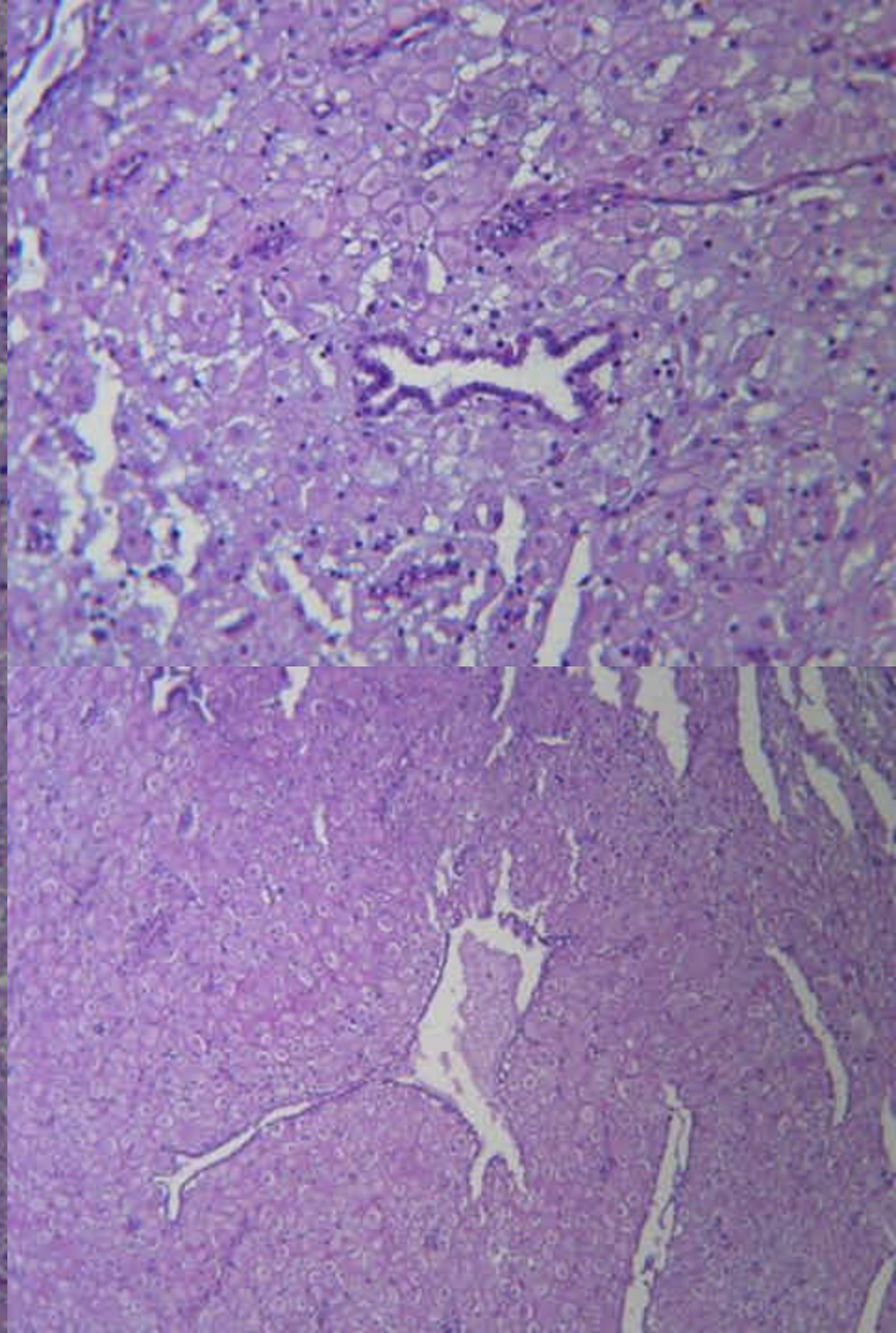
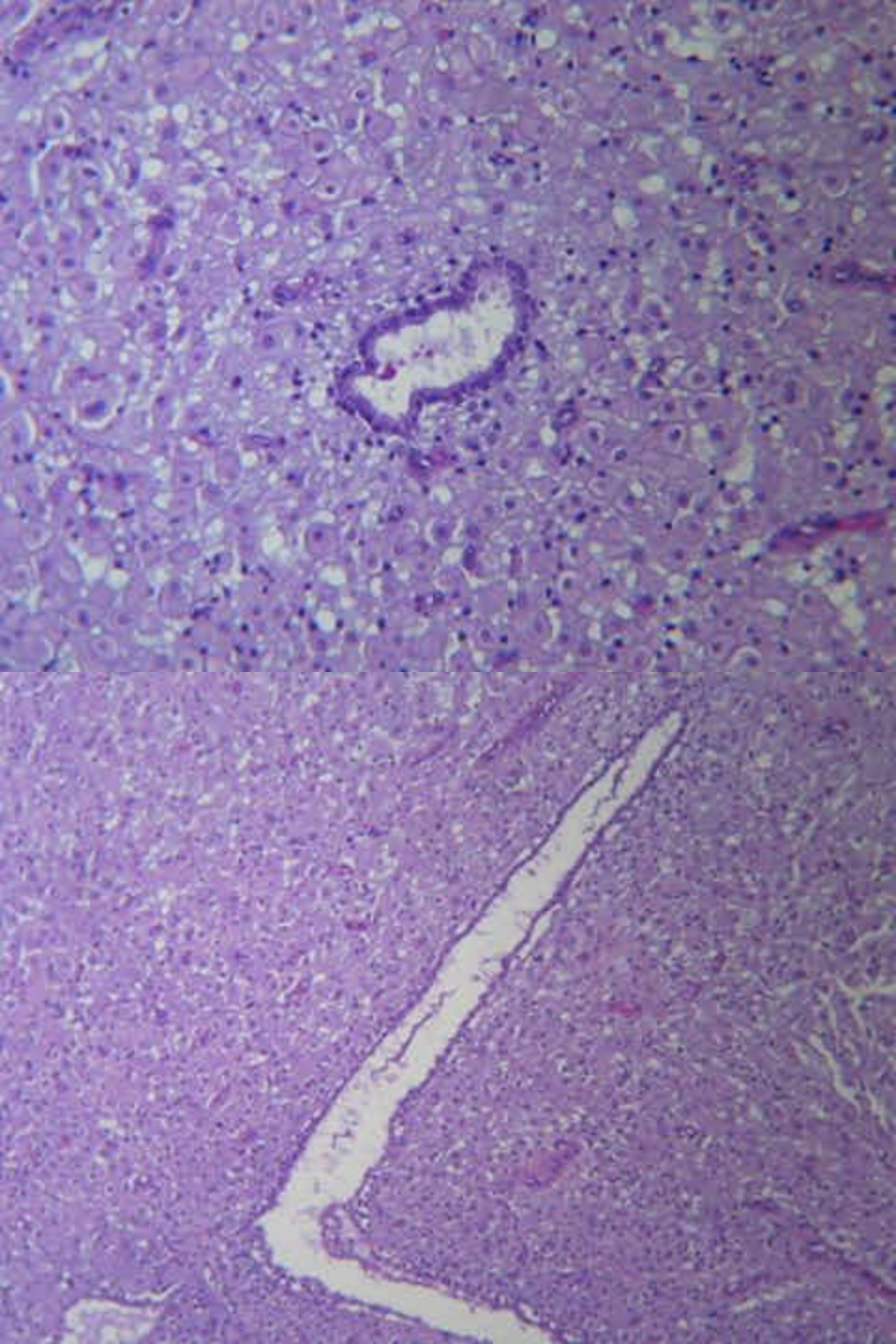
**LESIONES EXOFÍTICAS
VULVARES EN PACIENTE
DE 35 A**

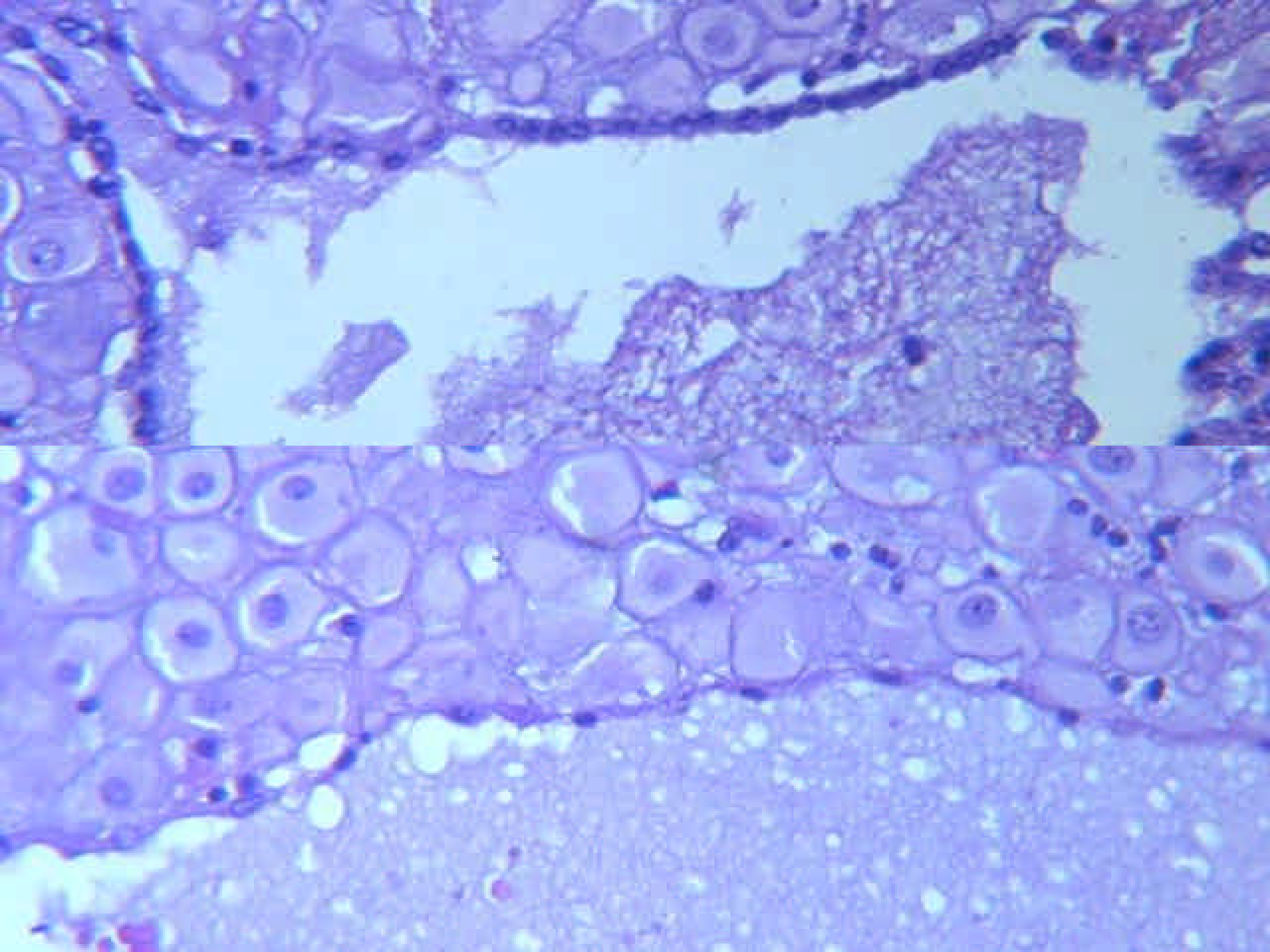
CASO 1

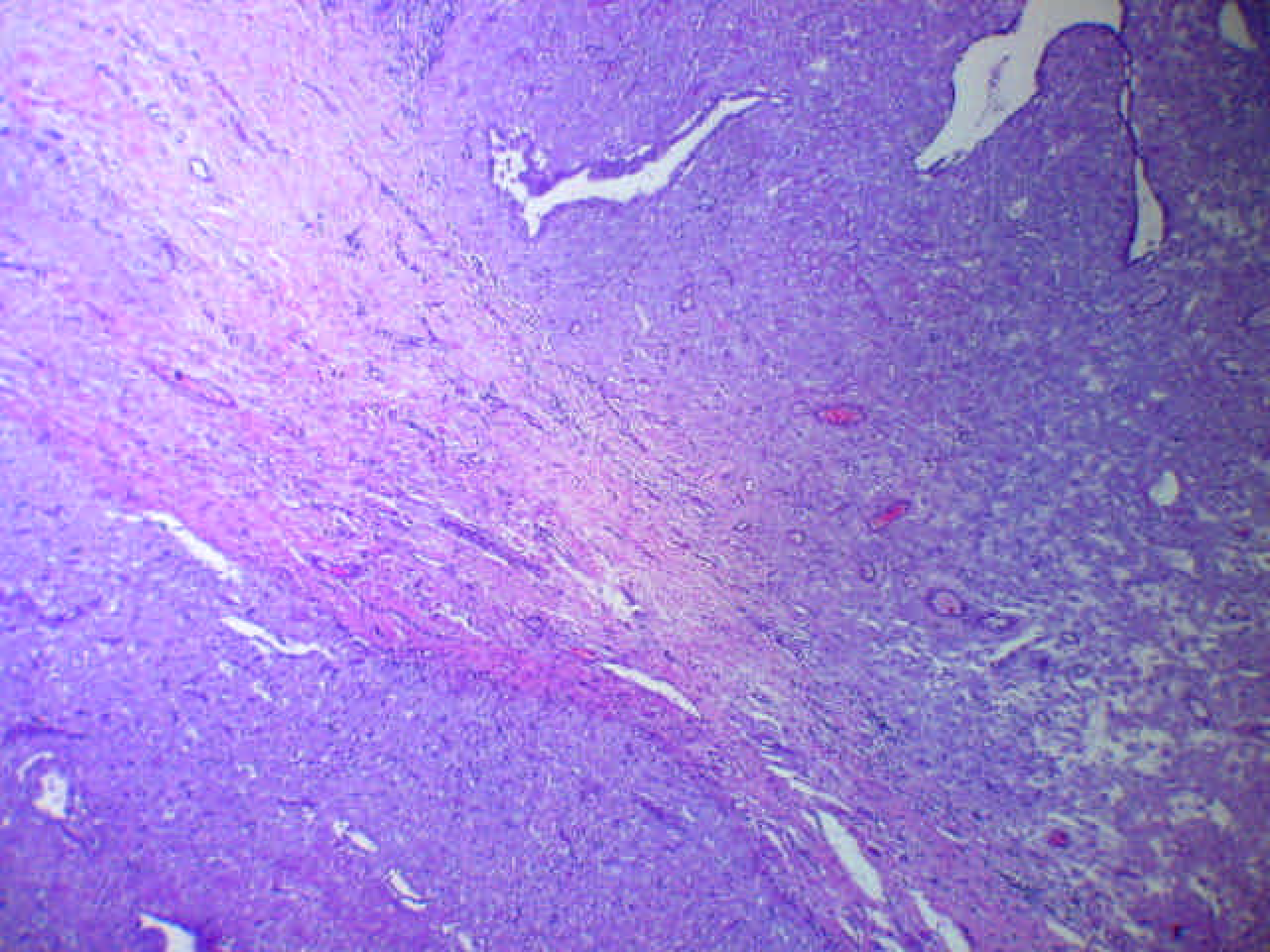
- **MUJER 35 AÑOS**
- **SEM 25 EMBARAZO**
- **ANTECEDENTES OBSTÉTRICOS: 2 PARTOS EUTÓCICOS CON EPISIOTOMÍA 8 Y 13 AÑOS ANTES**
- **LESIÓN DE 2 X 3 CM. EN CARA INTERNA DE LABIO MAYOR DERECHO Y DE 0.8 CM EN HORQUILLA PERINEAL**

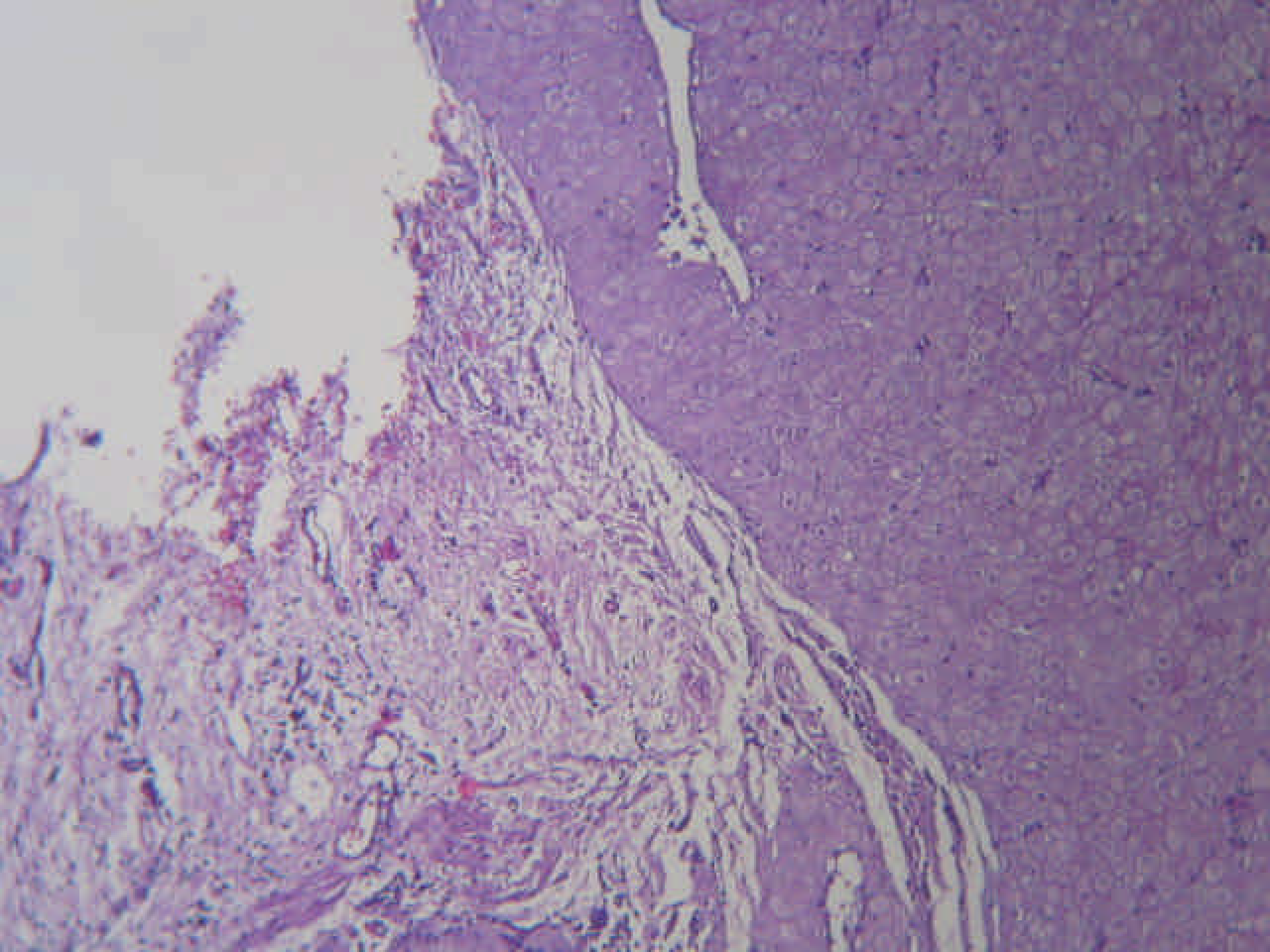


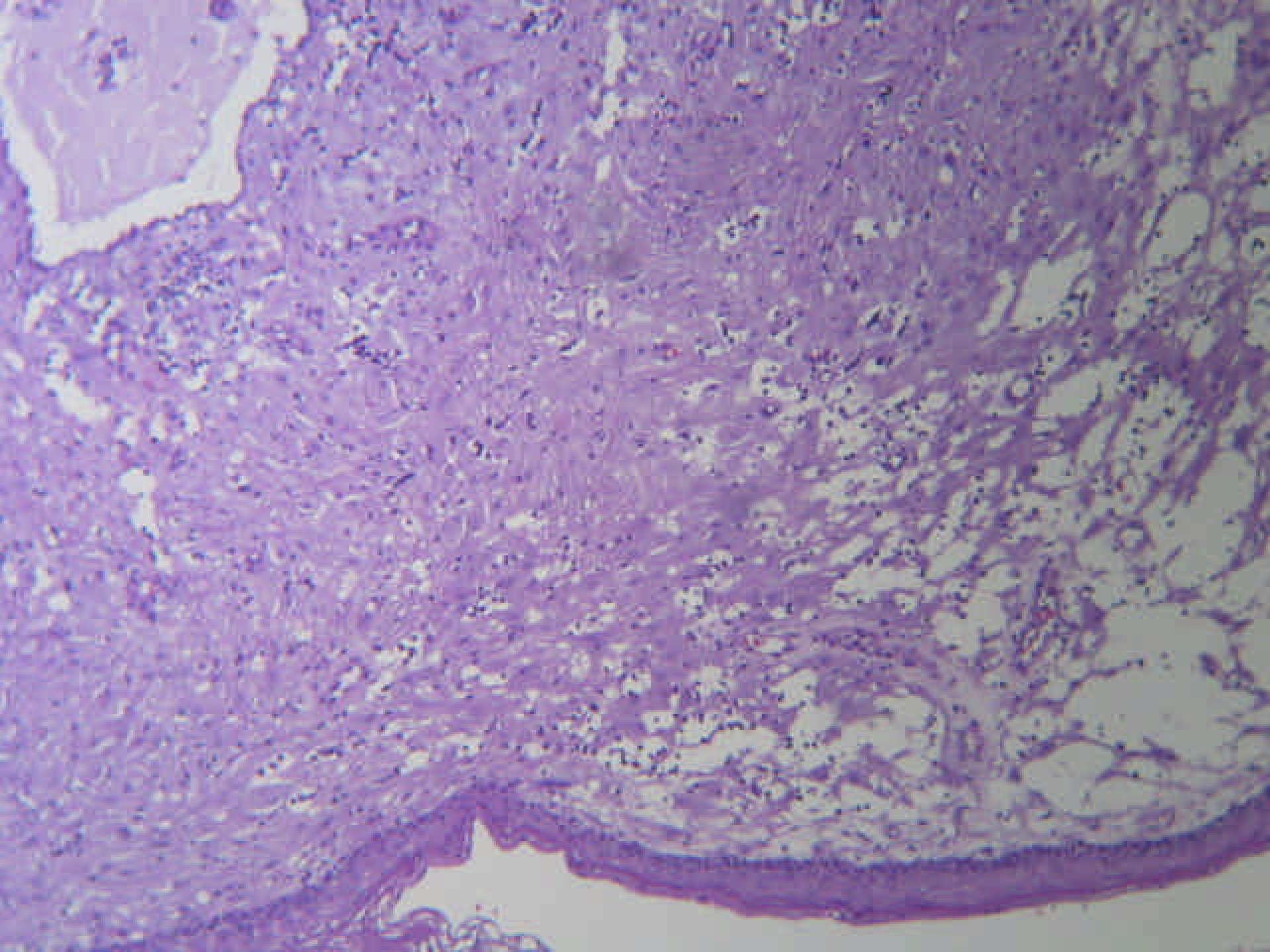


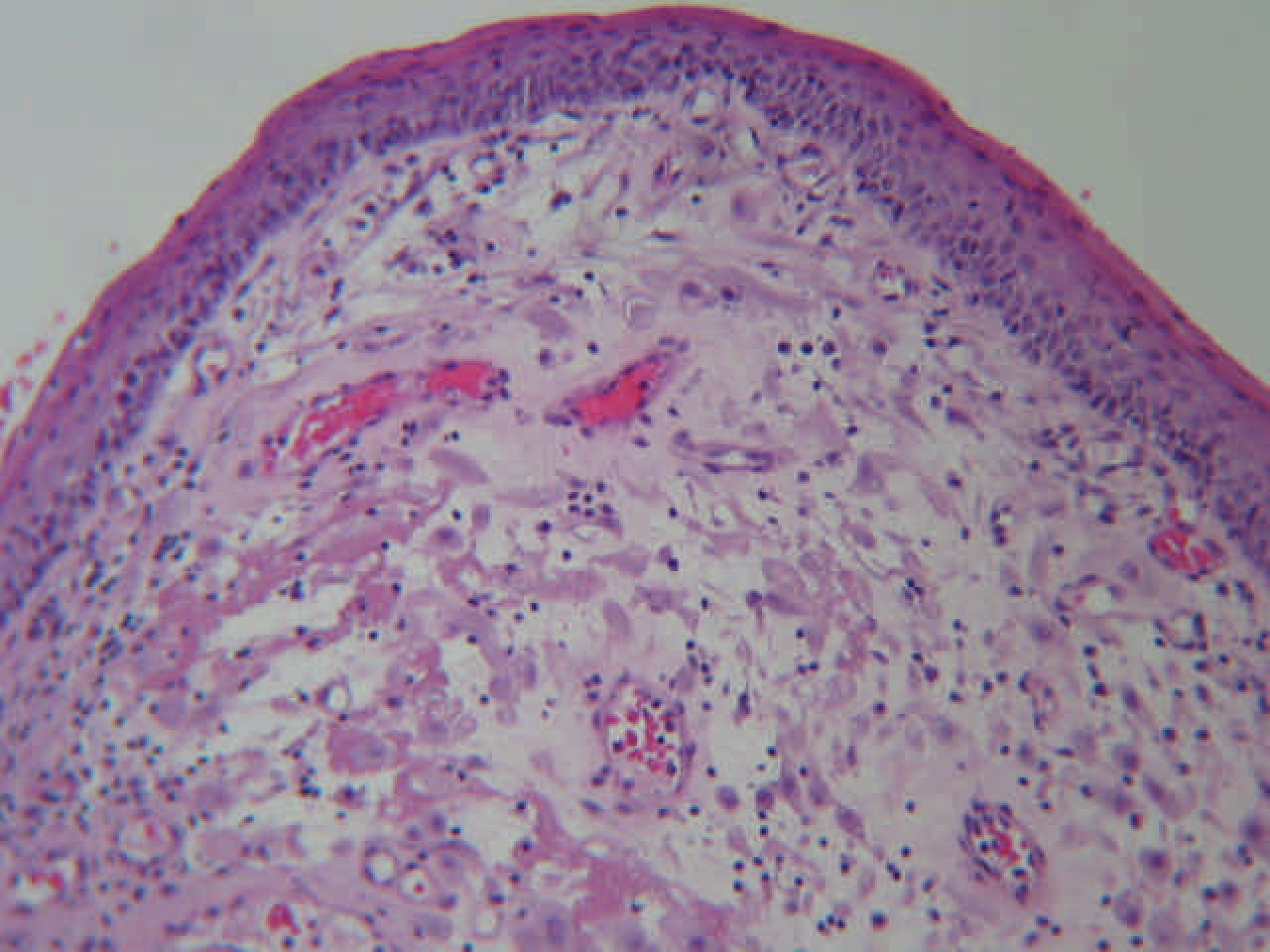


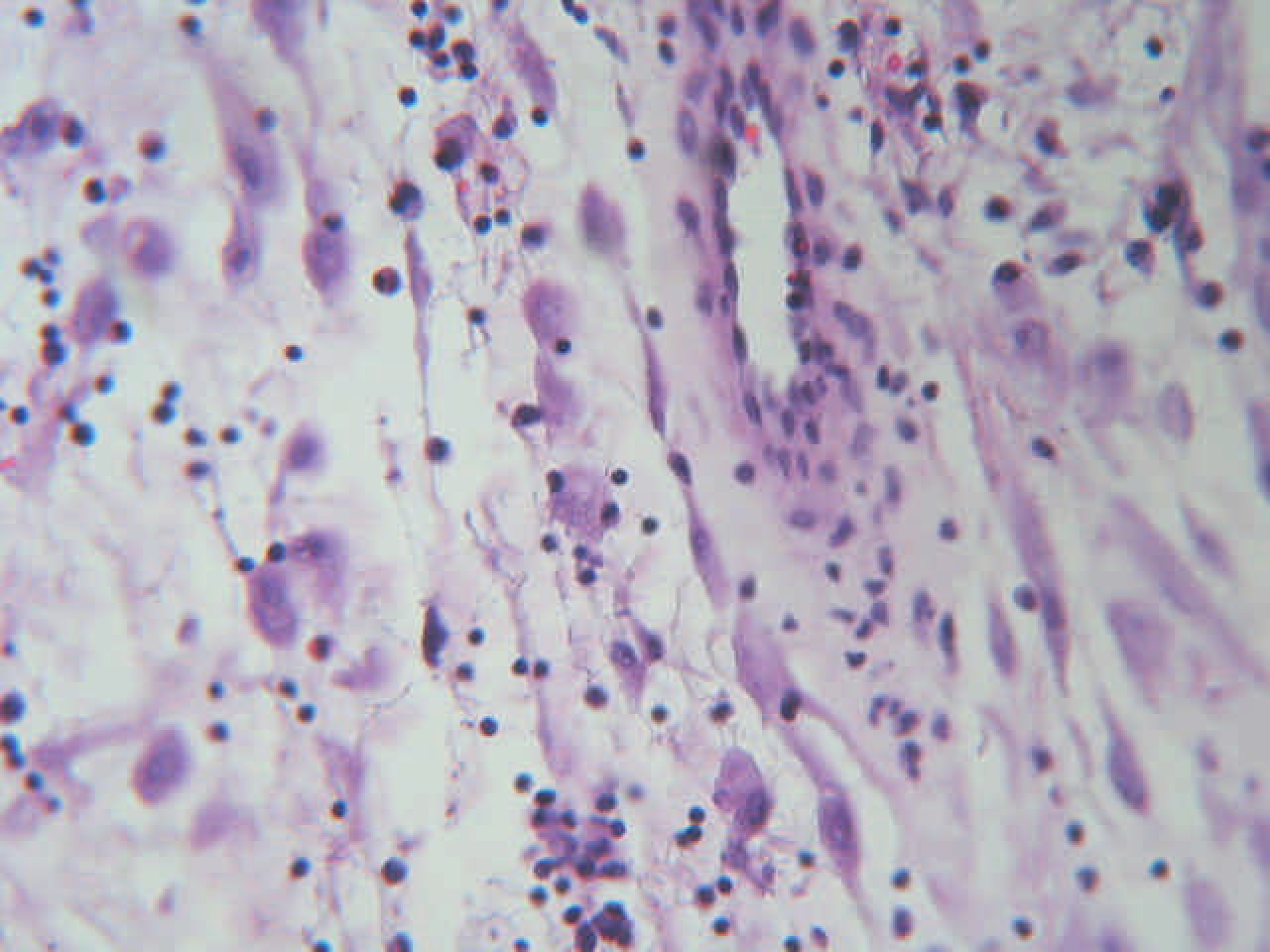


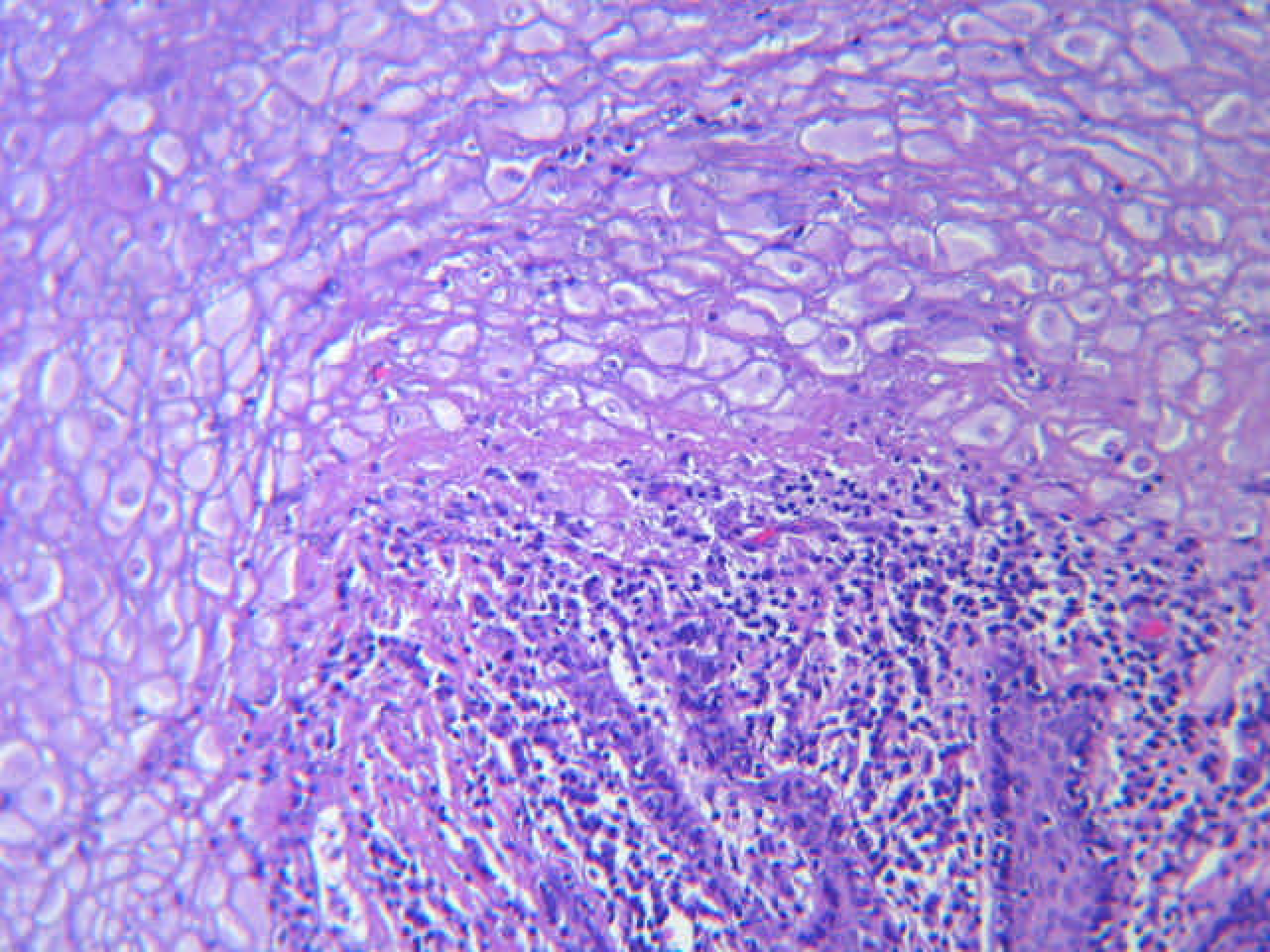








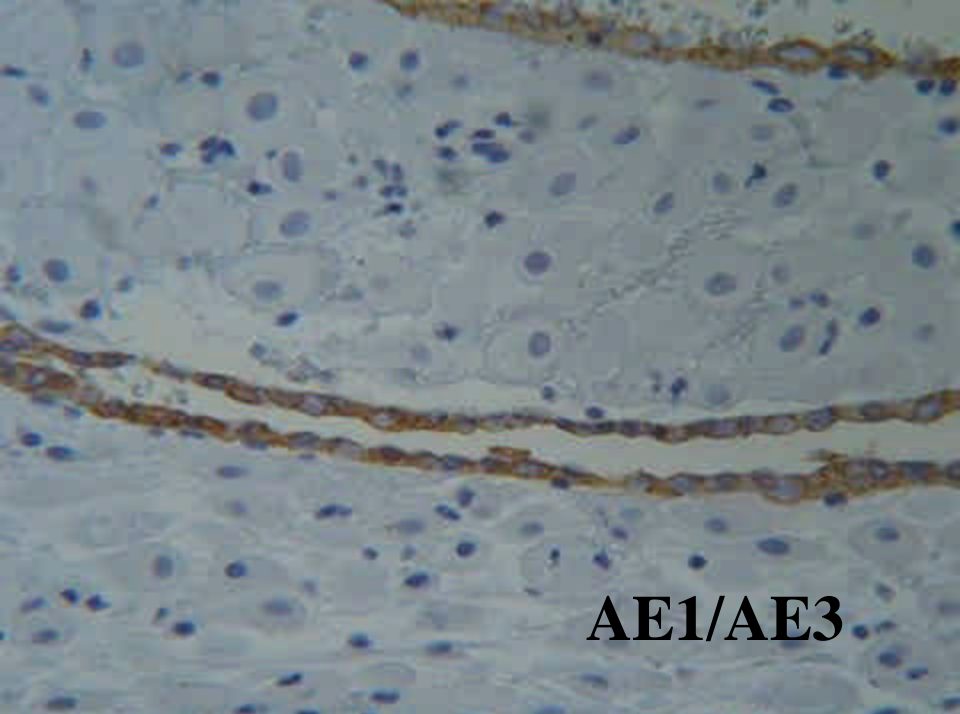




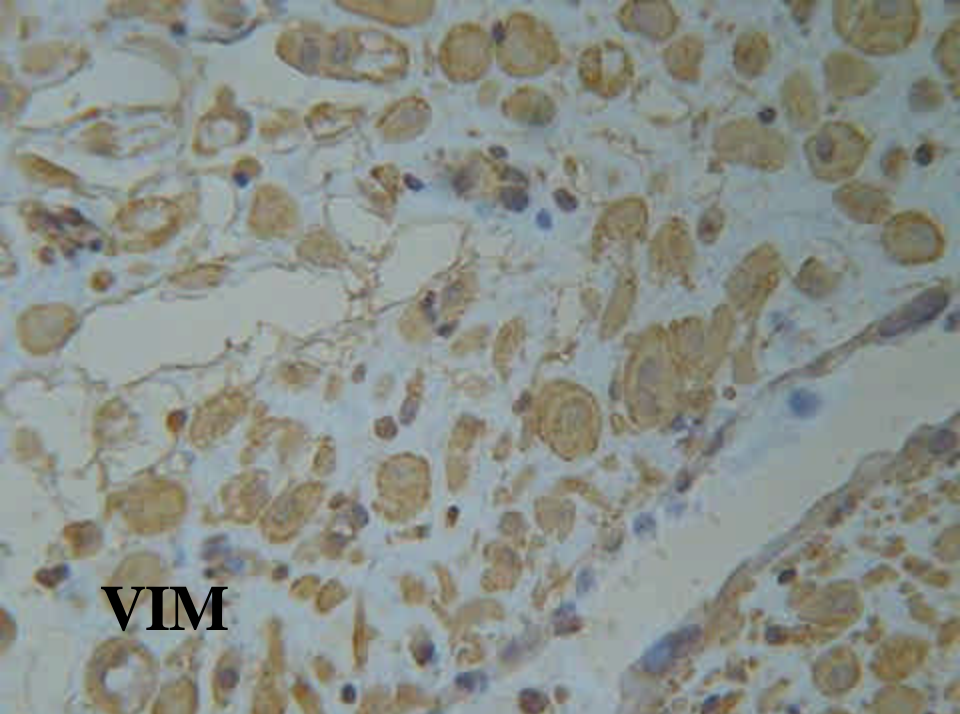
DIAGNOSTICO

ENDOMETRIOSIS VULVAR CON

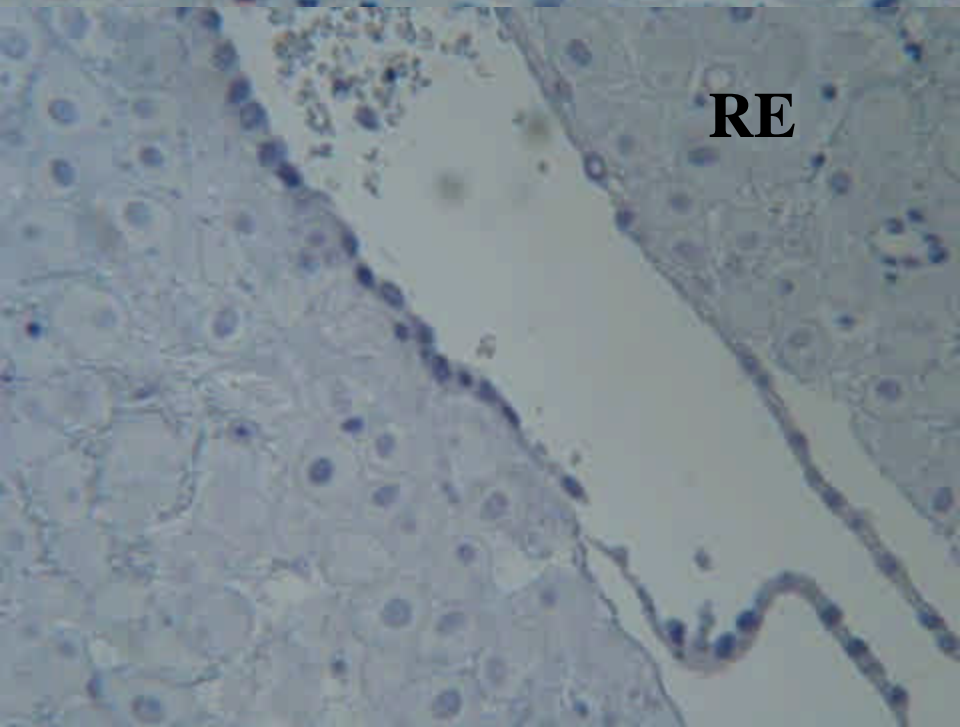
EXTENSA REACCIÓN DECIDUAL



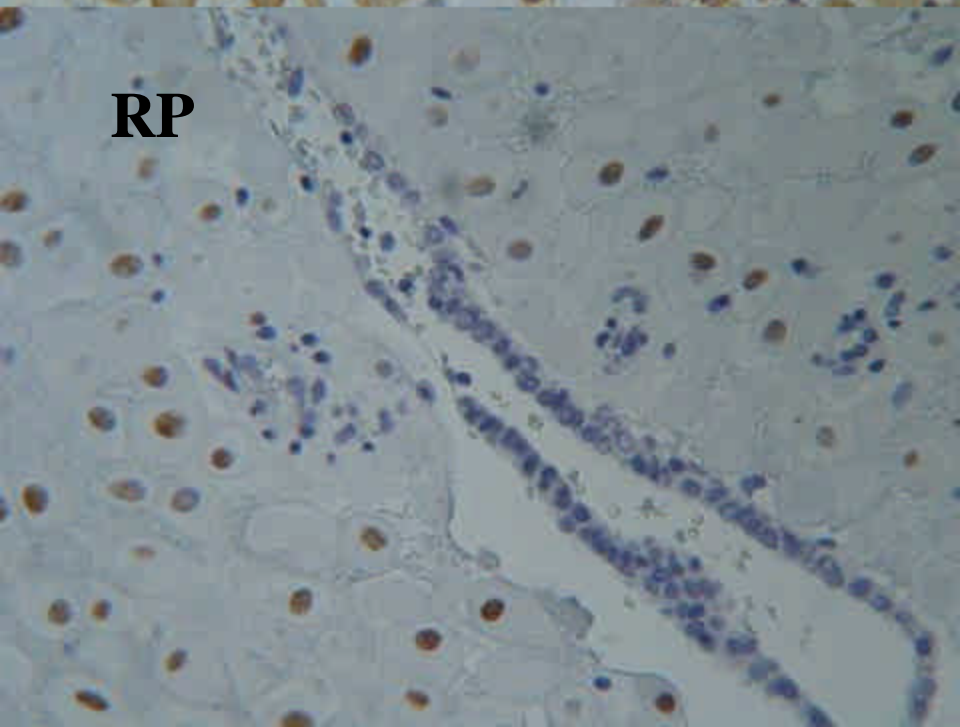
AE1/AE3



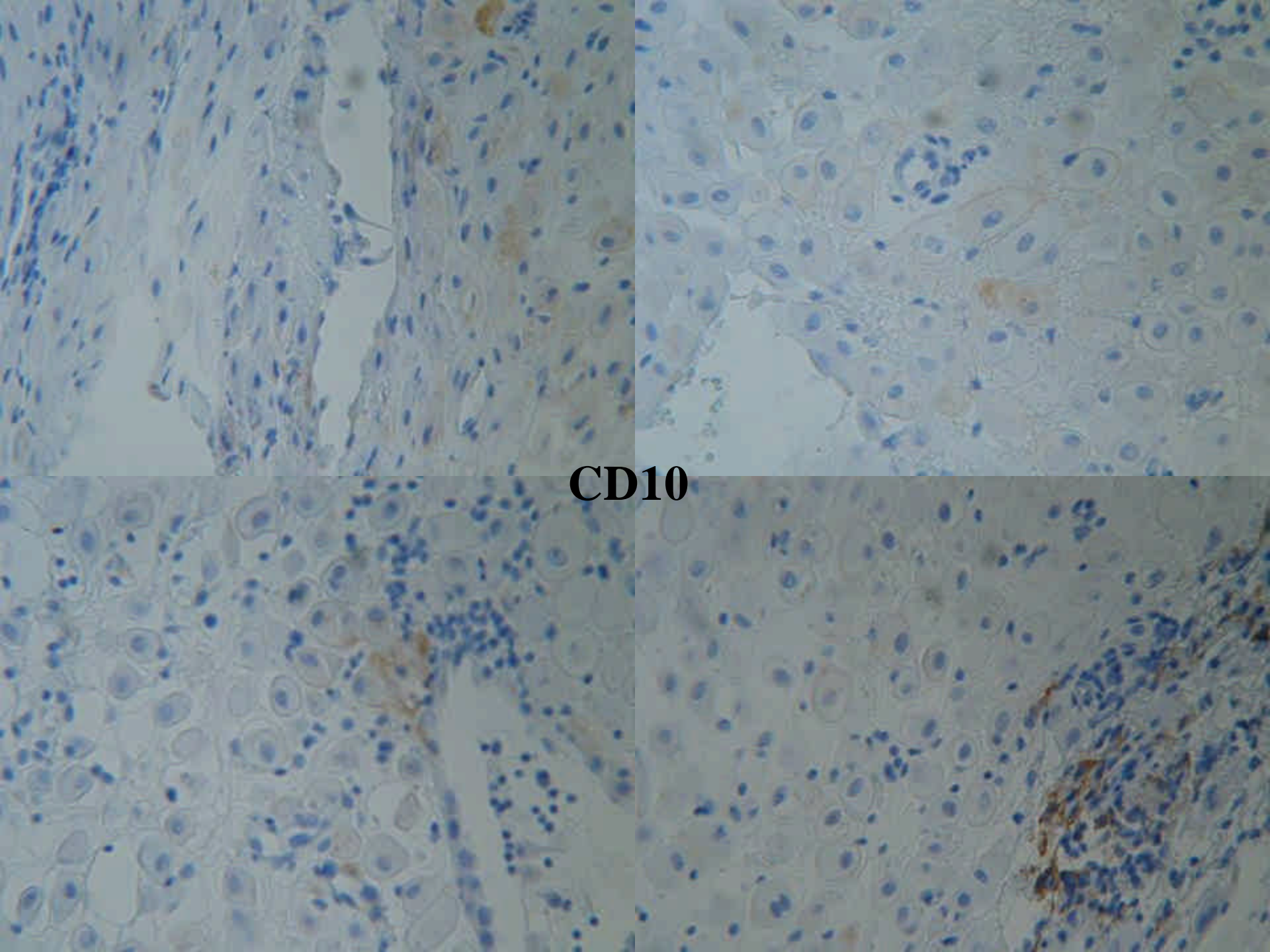
VIM



RE



RP



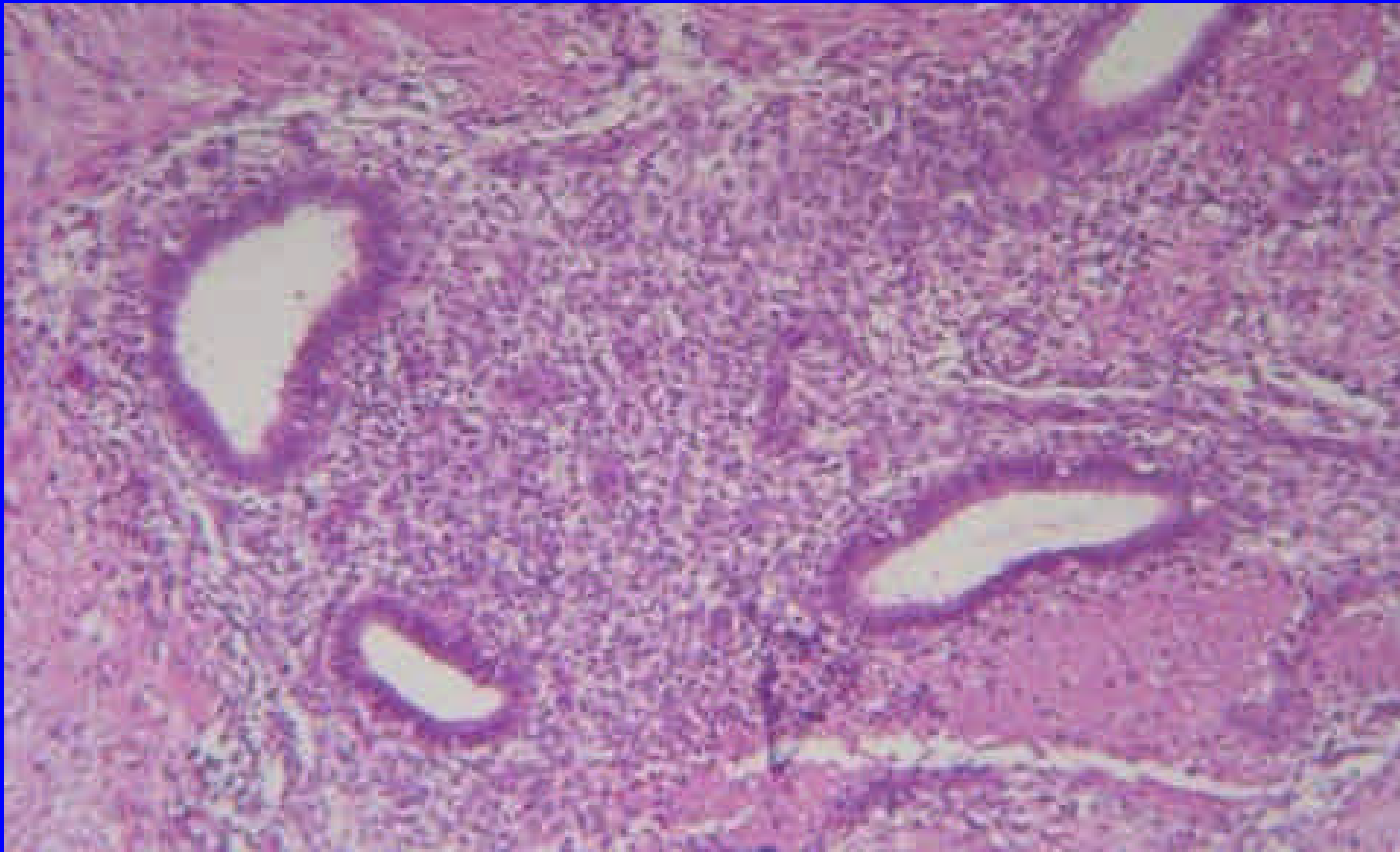
CD10

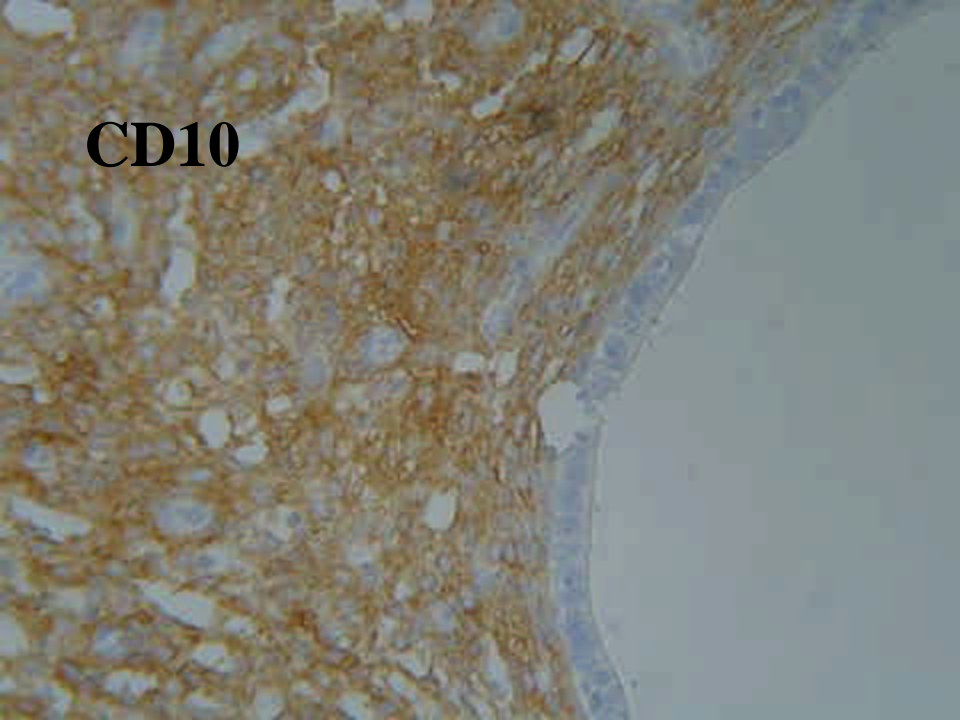
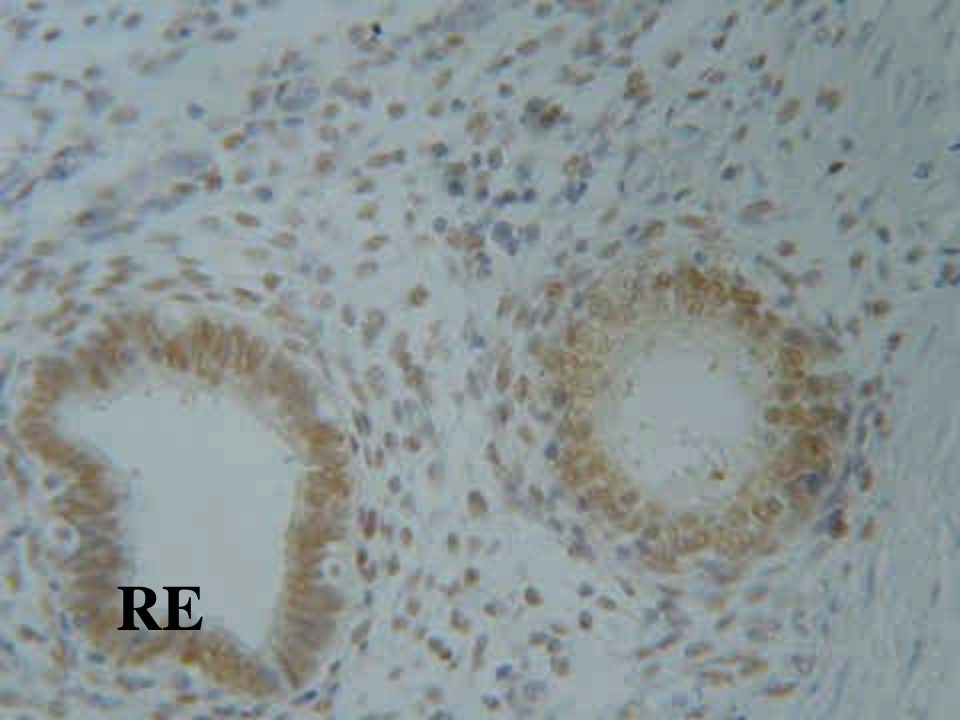
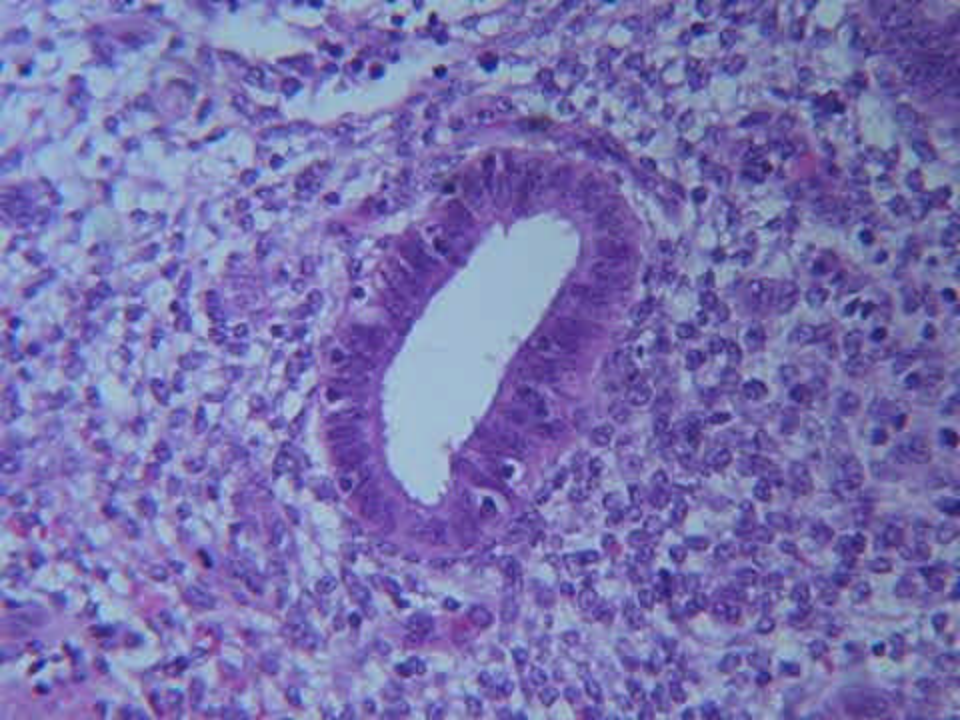
DIAGNOSTICO DIFERENCIAL DECIDUOSIS

- **Mesotelioma maligno (peritoneo)**
- **Carcinoma metastasico**
- **Adenosarcoma**
- **Melanoma**
- **Sarcoma epitelioido**
- **Fibroxantoma atípico**
- **Histiocitoma fibroso angiomatoide**
- **Histiocitoma maligno mixoide**

CASO 2

- **39 años**
- **Cesárea 12 años antes**





RE

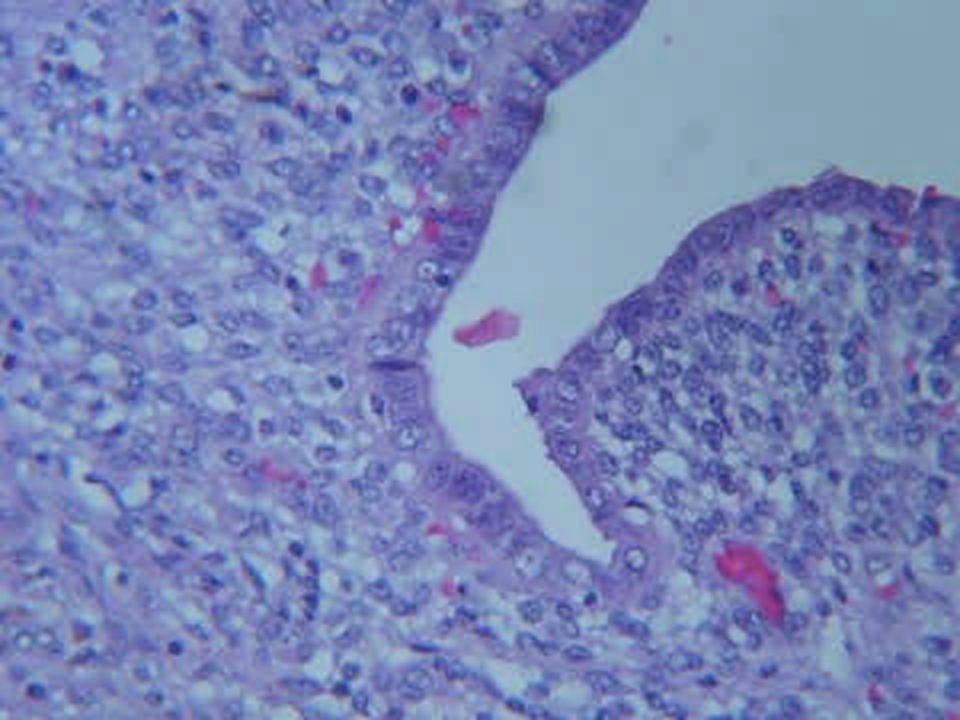
RP

CD10

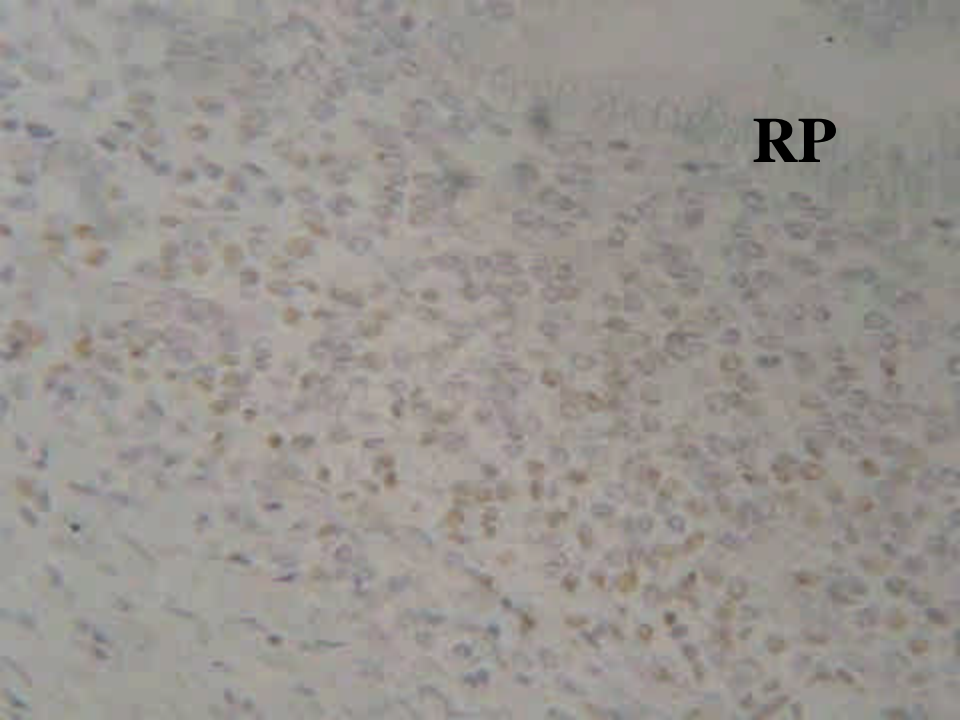
CASO 3

- **Mujer de 38 años**
- **Cirugía abdominal por miomas y ligadura tubárica 2 años antes**

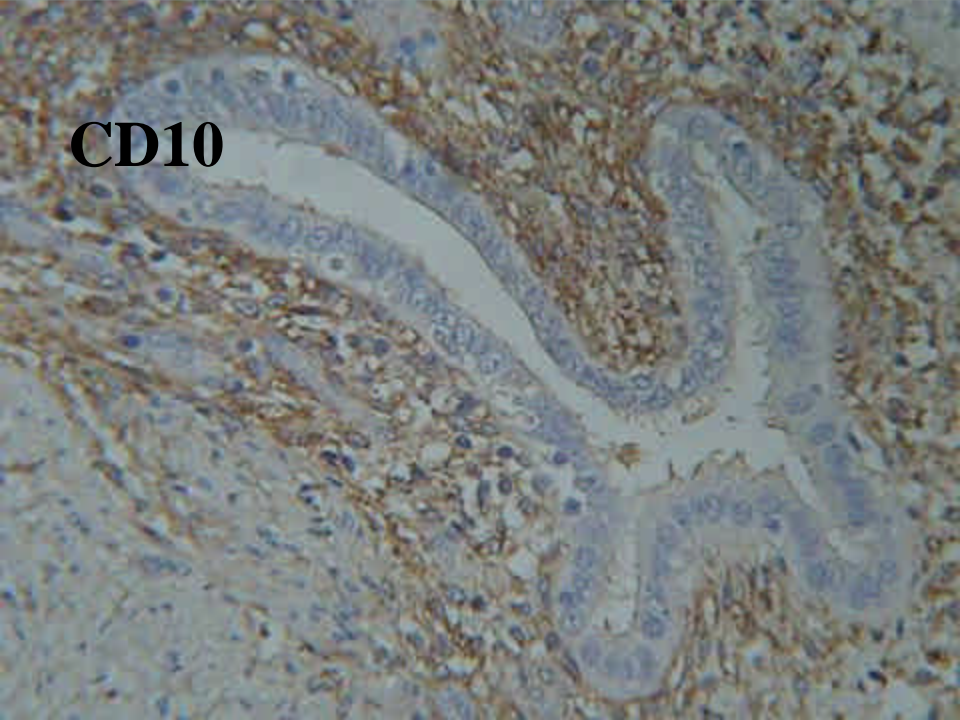




RE



RP

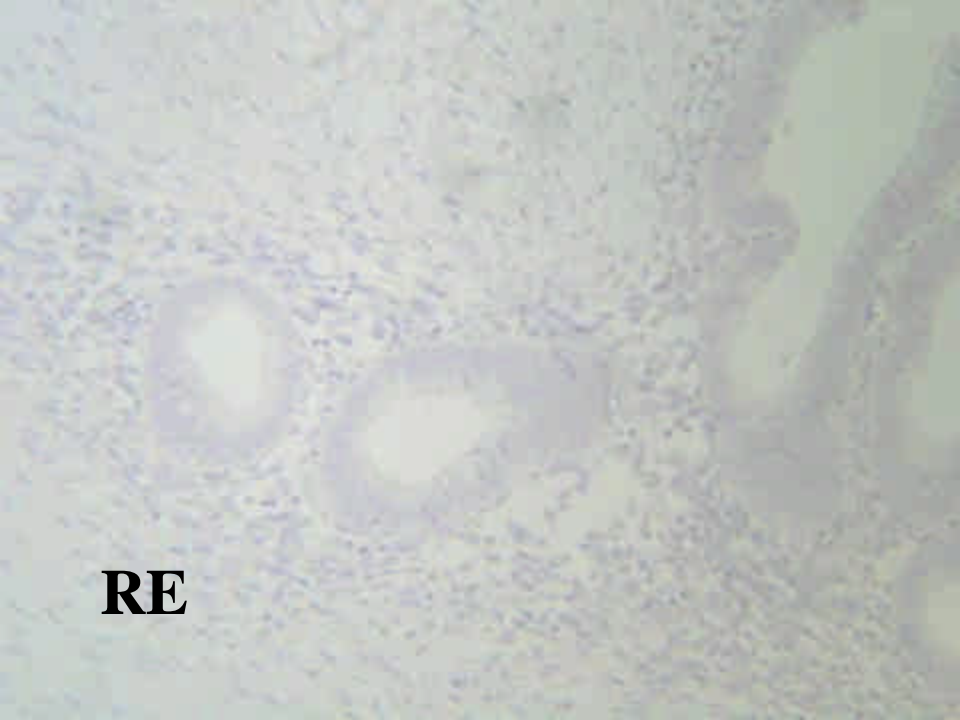


CD10

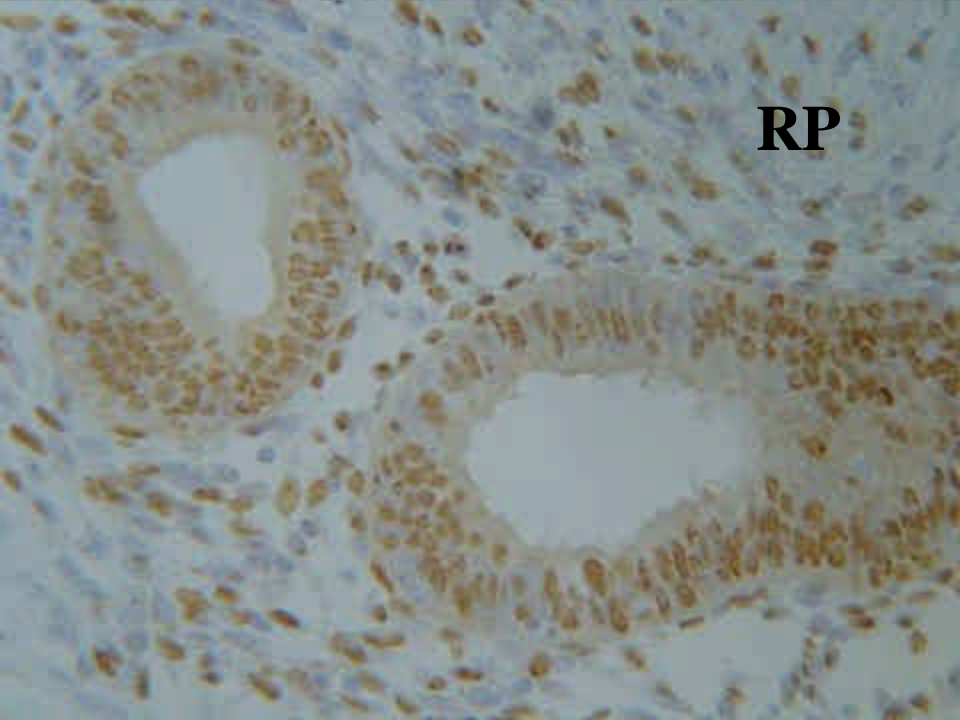
CASO 4

- **Mujer de 35 años**
- **Cirugía abdominal por miomas 5 años antes**

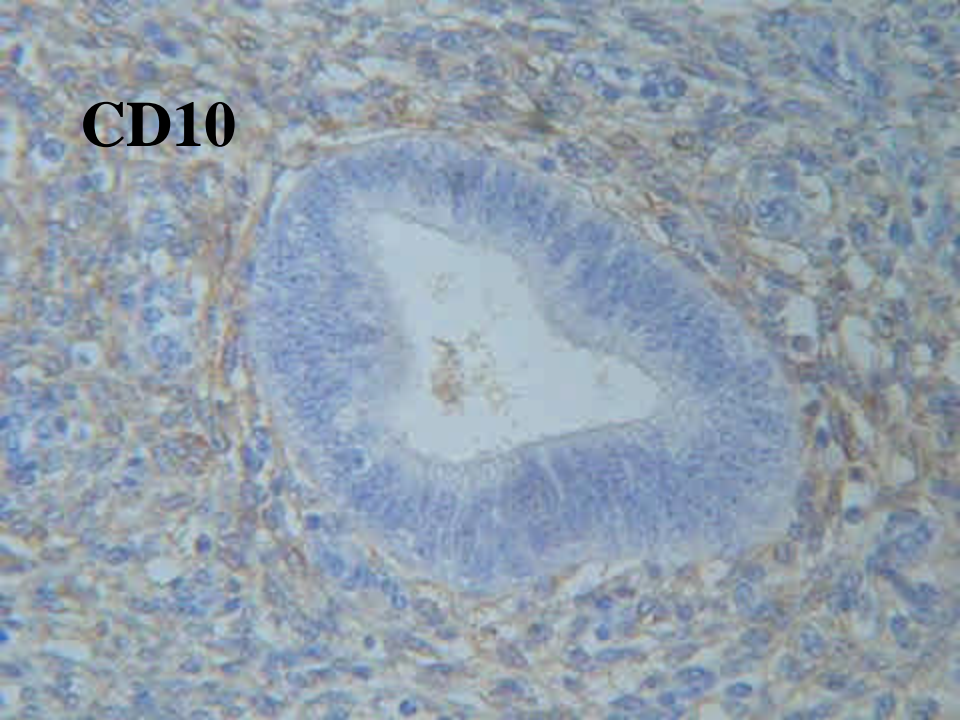




RE



RP



CD10

ENDOMETRIOSIS

LOCALIZACION	CASOS	% ENDOMETRIOSIS	%PIEZAS
OVARIOS	71	79.775	5.115
OVARIOS Y PERITONEO	7	7.865	0.504
PERITONEO	7	7.865	0.504
PIEL	4	4.495	0.288
TOTAL	89 (1388)	100	6.41

TIEMPO DE LATENCIA

- **CASO 1: 8 años**
- **CASO 2: 12 años**
- **CASO 3: 2 años**
- **CASO 4: 5 años**