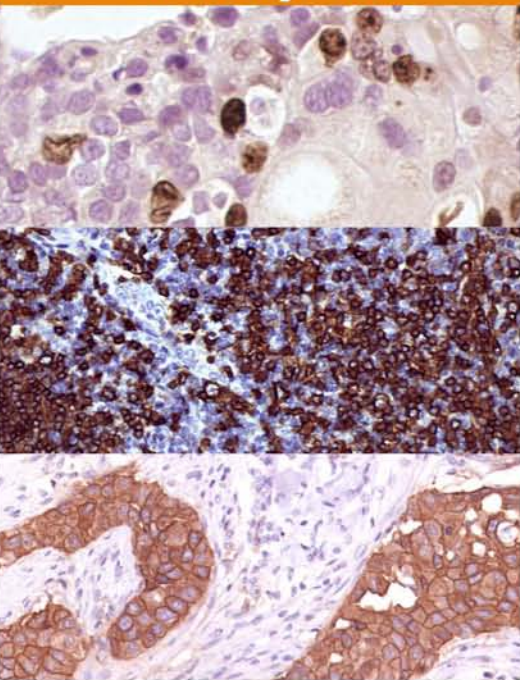


Immuno  
histochemistry  
Analysis



**Ariol**<sup>®</sup>



Automated scanning and quantification of nuclear, cytoplasmic, and membrane IHC stained tissue sections for the study of cellular protein expression

## Accurate IHC Analysis

**Ariol is the best way to bring objectivity and precision to IHC scoring:**

Rapidly scan IHC slides at 5x, 10x, 20x, or 40x magnification

Differentiate between staining in nuclear, cytoplasmic, and membrane areas

Automatically select the analysis region of an IHC slide using Slide-Link™ by selecting the area desired on a serial slide section stained for H&E

Quantify staining with high-resolution numerical data or use traditional 0, 1+, 2+, 3+ scoring

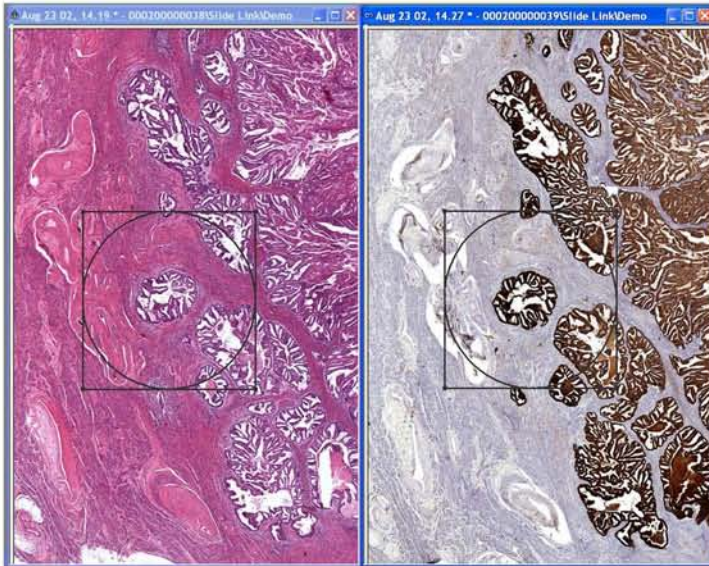
Gate out non-specific background staining with user controllable thresholds

Gate out cells of non-interest by user controllable shape classifiers

**Immuno  
histochemistry  
Analysis**



**Fast and easy to use. For objective analysis, your partner in IHC analysis.**



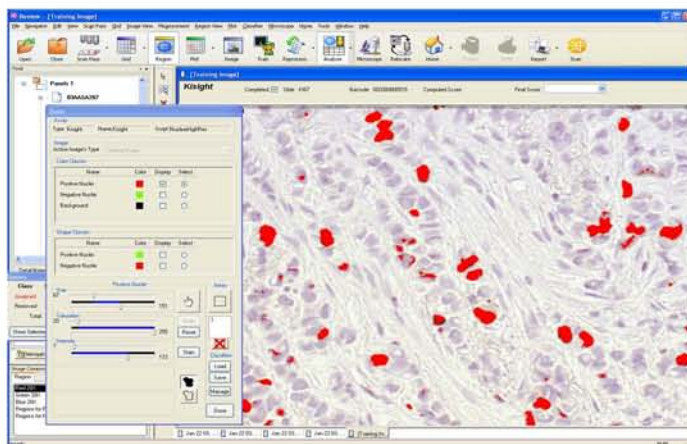
Use the H&E slide to select and analyze the same region on every assay in a test panel with one click. It's easy with Slide-Link™.

**Example Workflow**

- System retrieves case information via barcode, loads slide onto stage, pre-scans at 1.25x to locate tissue, and then auto scans at 5x (or 10x, 20x, 40x)
  - User selects the region of interest to analyze (or alternatively to re-scan at higher magnification)
  - System automatically analyzes selected area at the magnification requested
  - User reviews the data
  - System generates report
- Time saving steps when system runs unattended     User interactive steps



Quickly train Ariol's classifiers to your unique samples and staining techniques by simply clicking on example cells in an image.



**North America**

Applied Imaging Corp.  
120 Baytech Drive  
San Jose, CA 95134-2302  
USA  
Toll-free : +1 800 634 3622  
Telephone: +1 408 719 6400  
Fax: +1 408 719 6401

**International**

Applied Imaging International Ltd  
BioScience Centre  
Times Square  
Newcastle Upon Tyne NE1 4EP  
UK  
Telephone: +44 (0) 191 202 3100  
Fax: +44 (0) 191 202 3101

