



## Virtual Slide Congress. Case # 05

- Slides Index

- Home

Alexandra Gené\*, C Gómez\*\*, A Forteza\*\*, F Terrasa\*\*, M Company\*\*, B Tomás\*\*\*, M Couce\*\*, Ramón Canet\*\*

\* Servicio de Anatomía Patológica. Hospital Universitario Son Dureta. Palma de Mallorca ESPAÑA

\*\* Servicio de Anatomía Patológica. Hospital Universitario Son Dureta. Palma de Mallorca ESPAÑA

\*\*\* Servicio de Otorrinolaringología. Hospital Universitario Son Dureta. Palma de Mallorca ESPAÑA

- Top

- Virtual Slide
- Case Report
- DIAGNOSIS
- Pathology
- References

### Case Report

We present a sphenoidal-sinus lesion in a 55 year -old man.

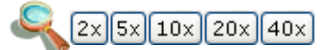
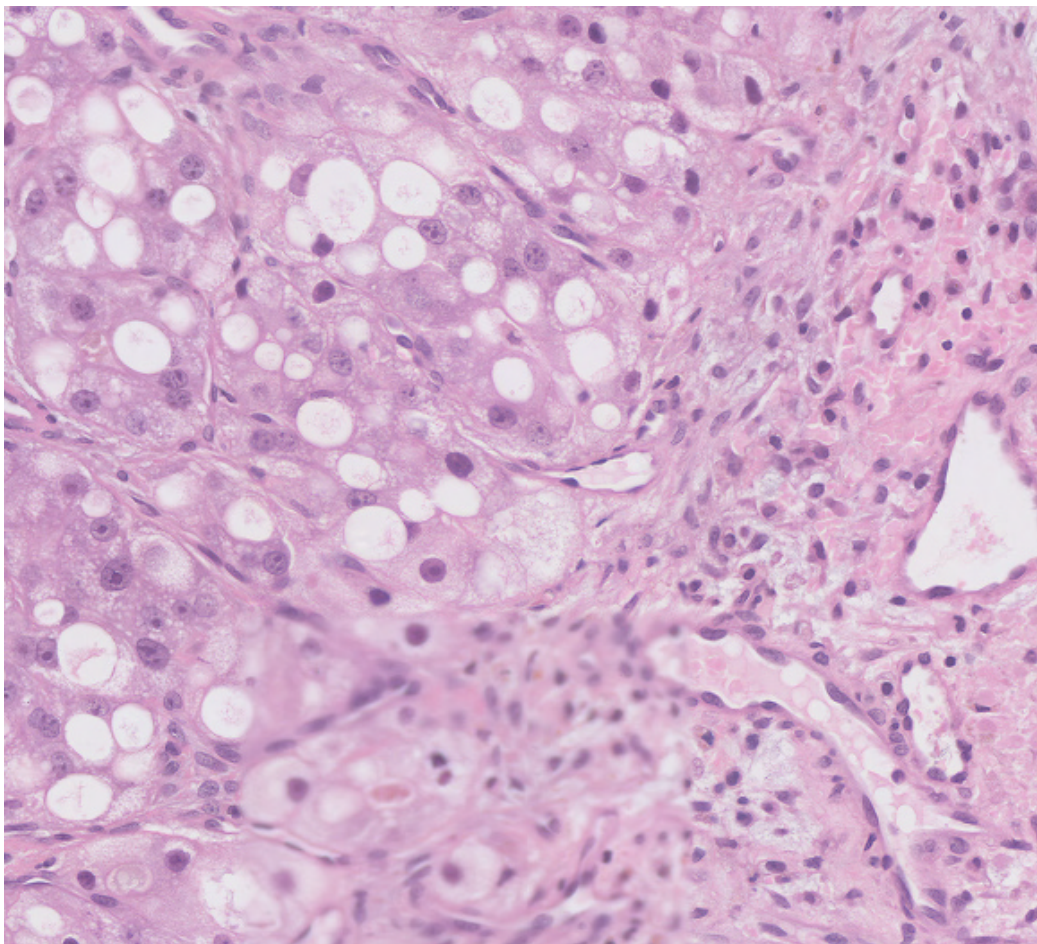


WebMicroscope

This slide's been kindly digitized by **WebMicroscope's team (Finland)**

Preparación amablemente digitalizada por los responsables de **WebMicroscope (Finlandia)**

**H&E**



Contrast: 1.00

Brightness: 1.00

Case 5, C5 (x40)

Regions of Interest: [On/Off](#)



See virtual slide in full window size - [Ver caso en Webmicroscope](#)

- Top

- Virtual Slide
- Case Report

### Diagnosis

- DIAGNOSIS  
- Pathology  
- References

- Sinonasal Papilloma (Papiloma nasosinusal)
- Inflammatory Polyp (Pólipo inflamatorio)
- Inflammatory lesions (Lesiones inflamatorias)
- Sinonasal Carcinoma (carcinoma nasosinusal)
- Metastasis

**FINAL DIAGNOSIS IS BELOW THIS LINE**

- Top

- Virtual Slide  
- Case Report  
- DIAGNOSIS  
- Pathology  
- References

## DIAGNOSIS

SPHENOIDAL-SINUS HEPATOCARCINOMA METASTASIS

- Top

- Virtual Slide  
- Case Report  
- DIAGNOSIS  
- Pathology  
- References

## Pathology

### Pathologic findings:

We received two tissue samples that measured 7 and 9 mm.

Histologically, broad necro-haemorrhagic areas with tumoral appearance could be seen.

The periphery of those areas showed polygonal cells with wide cytoplasm, micro and macro steatotic vacuolization. Some had big vesicular nuclei with prominent nucleoli that resembled hepatocytes. In some areas they adopted a nodular pattern, surrounded by fibrosis with a prominent vascular net. Small bile clusters could also be identified.

Figura 1

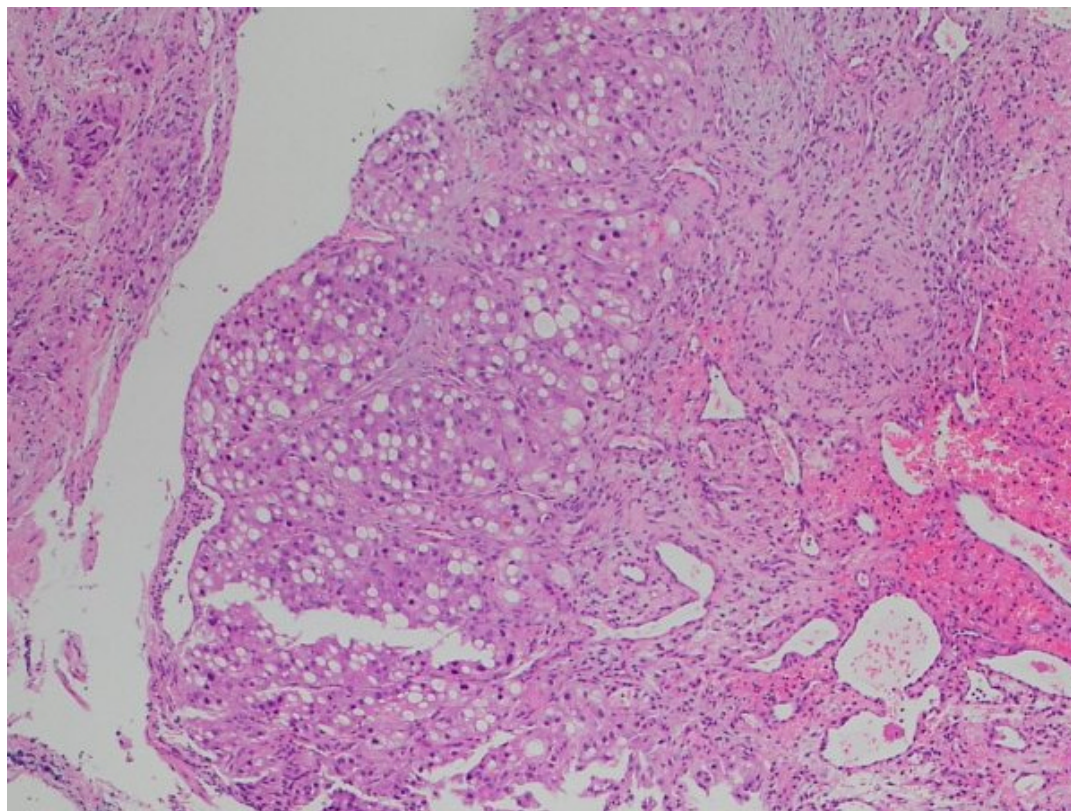
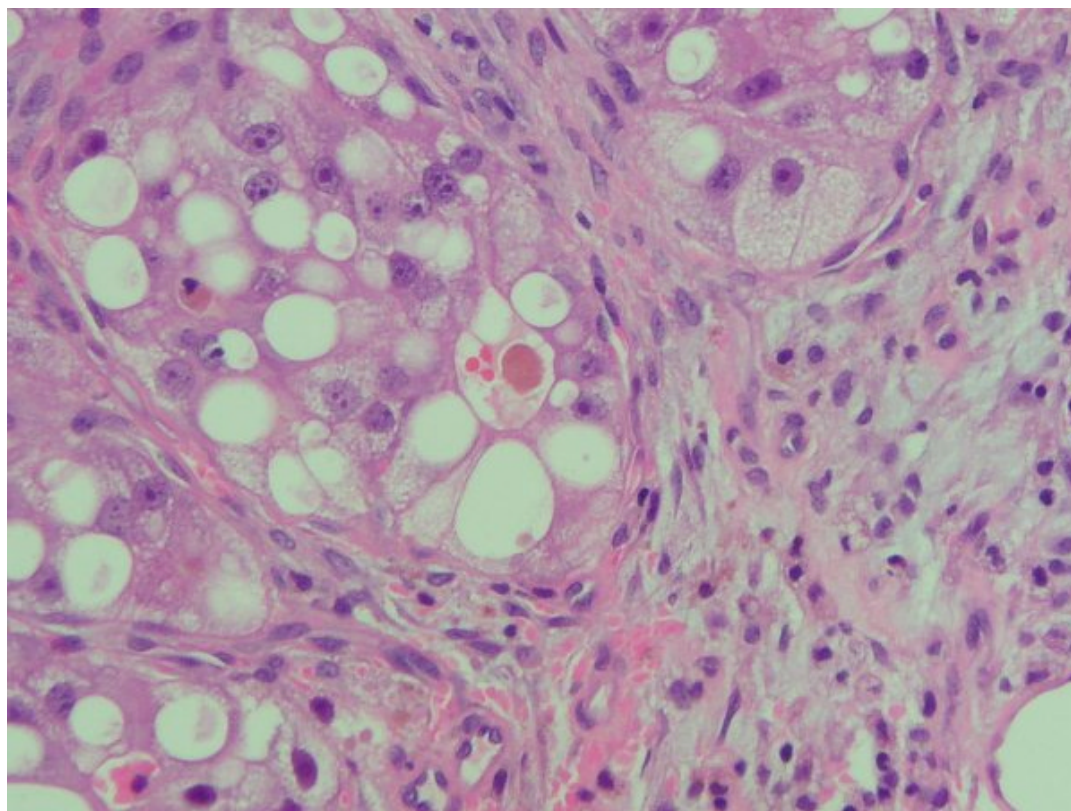


Figure 2



- Top
- Virtual Slide
- Case Report
- DIAGNOSIS
- Pathology
- References

### References

- 1 - Aung TH, Po YC, Wong WK. Hepatocellular carcinoma with metastasis to the skull base, pituitary gland, sphenoid sinus, and cavernous sinus. Hong Kong Med J. 2002 Feb;8(1):48-51.
- 2 - Kleinjung T, Held P. Metastasis in the frontal skull base from hepatocellular carcinoma. HNO. 2001 Feb;49(2):126-9.
- 3 - Sim RS, Tan HK. A case of metastatic hepatocellular carcinoma of the sphenoid sinus. J Laryngol Otol. 1994 Jun;108(6):503-4.
- 4 - Waxman JS, Seife B, Waxman M. Hepatocellular carcinoma presenting as sphenoid sinus metastasis. Mt Sinai J Med. 1985 Mar;52(3):221-4.

- Top
- Virtual Slide
- Case Report
- DIAGNOSIS
- Pathology
- References

### Comments

- **Oscar Marin** (17/10/2005 3:57:33)

Very interesting case.

- **Esther Nahir Contreras Valerio** (18/10/2005 13:09:56)

Magnific case. Thanks  
*Magnifico caso. Gracias.*

- **Mirta Garcia Jardon** (24/10/2005 12:14:50)

It is a very good case. I'm sorry that I'm still training myself in the use of images and sometimes the views are not well focused.  
*Muy bueno el caso. Pena que esté todavía entrenándome en el manejo de las imágenes y a veces las vistas no me quedan bien enfocadas.*

- **Cesáreo Corbacho Cuevas** (24/10/2005 13:17:39)

It is a very interesting case with excellent pictures. Thanks a lot and warmest greetings to the authors.

*Un caso muy interesante con unas imágenes excelentes. Muchas gracias y un saludo muy cordial a los autores.*

**- maria isabel lorenzo paz** (27/10/2005 22:09:54)

Very good case with clear images  
*muy buen caso, con imagenes claras*

**- MAGDA TORRES CARRILLO** (01/11/2005 17:29:32)

Very interesting  
*Muy interesante*

**- Bayardo Flores** (03/11/2005 17:54:22)

Surprising case, which allows us to begin to familiarize with virtual pathology, that here is of exceptional quality. Congratulations.  
*Sorprendente caso que ademas nos permite comenzar a familiarizarnos con la patologia virtual que aquí es de una calidad excepcional. Felicidades*

**- HUGO GÓNGORA JARA** (08/11/2005 22:02:07)

Por favor quería preguntar si tenían el dato clínico de tumor primario en hígado, dato que ayuda a la tipificación como metástasis. El diagnóstico de malignidad era obvio. Ahora me doy cuenta que histológicamente es compatible con hepatocarcinoma. Gracias por presentarlo. Excelentes imágenes.

**- Maribel DONASTORG** (10/11/2005 13:20:14)

Localizacion rara para metastasis de Neoplasia maligna de higado, felicidades, interesante.

Maribel Donastorg

**- MARIA DEL CARMEN VAZQUEZ CASTRO** (18/11/2005 16:59:27)

EXTRAORDINARIO SITIO PARA UNA LESIÓN METASTASICA, INCLUSO PARA EL HIGADO.